

# Application Note



## GPSG-1000 Dual RF Channel Operation



Some GPS receivers require 2 GPS channels to be present at the same time for proper GPS signal reception. For example; a dual channel GPS receiver designed for L1 and L2C operation.

This can be accomplished by using two GPSG-1000 units simultaneously in order that the outputs of the units, each

operating on a different RF channel, can be combined to provide a single synchronized RF output.

This Application Note defines the procedure to synchronize two GPSG-1000 units and combine the RF channel outputs.

Equipment required for combining and operating two GPSG-1000 signals simultaneously.

Nomenclature	QTY	Part Number (or type)
Aeroflex GPSG-10000 w/ RF Combiner Firmware ver 1.02 or later and Software ver 2.5.0 or later.	02	Aeroflex 87339
26 pin Sub D plug connector	02	Positronic WDD26P2 (example)
Combiner 3 way, GPSG	01	Aeroflex 90948
Cables and adapters to inter-connect the GPSG 1000 units and other required equipment	As req	Any, Coax cables should be 50 $\Omega$ impedance, matched in length ( $\pm 3''$ ), and short as possible ( $< 10'$ ). The 10 MHz reference cable should be $< 3'$ .
Pulse Generator capable of outputting a 3.3 V pulse with 100 uSec pulse width	01	Agilent 33220A (example)
Oscilloscope 500 MHz BW	01	Tektronix TDS3000C (example)

See Figure 1 for equipment interconnection. The interface cables for the AUX connectors on the GPSG-1000 units will be locally fabricated.

Note: The RF Combiner Firmware version may be checked in the following manner:

1. From the Launch Bar select System, then System Configuration.
2. On the System Configuration screen select the Hardware tab from the top edge of the display. This displays all hardware ID and Firmware versions. Find RF Combiner Firmware Version on the list.

Note: The GPSG-1000 Software version may be checked in the following manner:

1. From the Launch Bar select System, then System Update.
2. The GPSG-1000 software version is displayed at the bottom of the System Update screen.

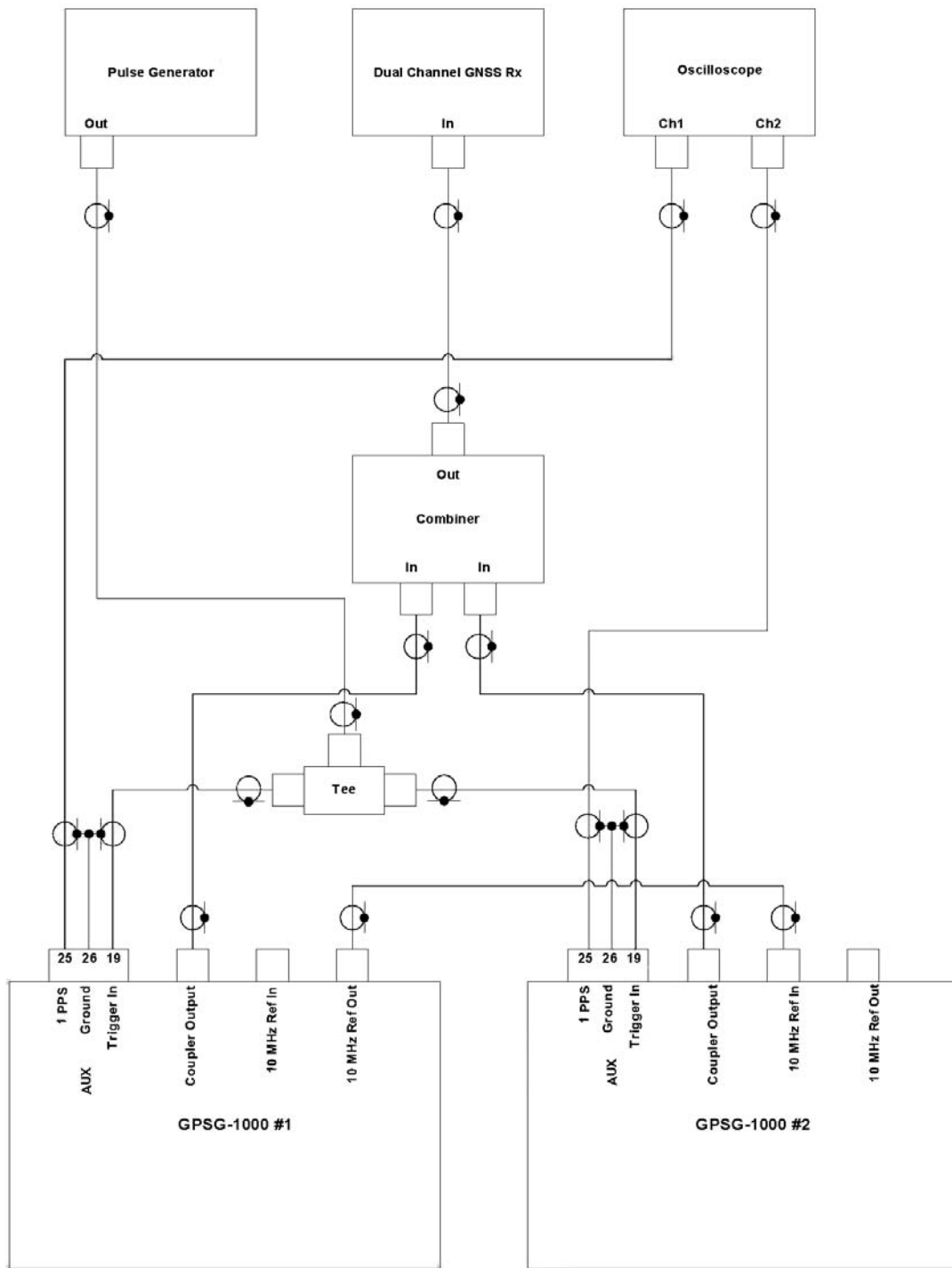


Figure 1

Simulation set up:

1. Both GPSG-1000 units must be using the same almanac data. Please ensure the almanacs are the same for both units before continuing.
2. Set up and connect equipment as per Figure 1. Ensuring that the cables used to connect the pulse generator to the GPSG-1000 units and the 1PPS output of the GPSG-1000 units to the Oscilloscope are equal length ( $\pm 3''$ ).

3. Set up the pulse generator to provide a manually triggered one time pulse. The pulse should be set up as per Figure 2.

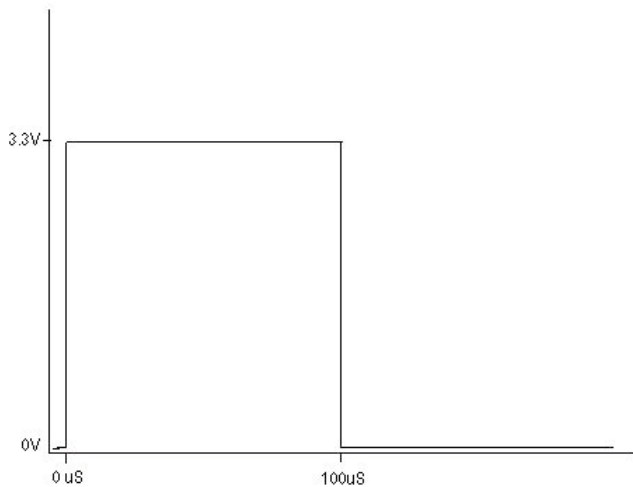


Figure 2

4. On GPSG-1000 #1 Menu Bar select Setup. On the Setup screen at the top row select the I/O tab. Set Ext Ref Out to ON, Reference Source to INT, and Trigger to External. See Figure 3.

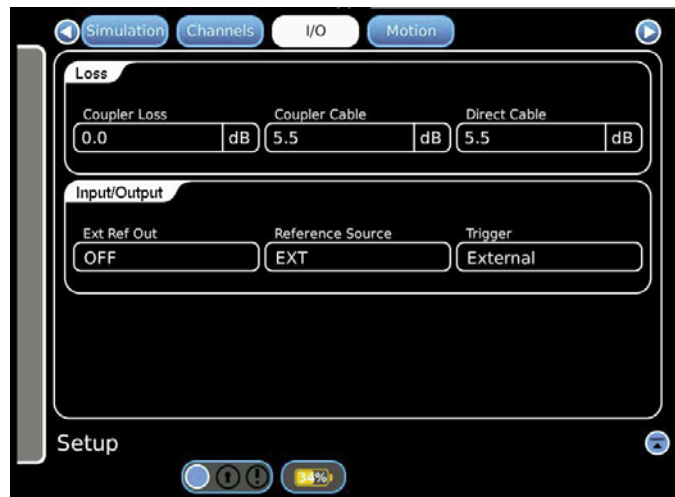


Figure 4

6. On both GPSG-1000 units Setup screen select the Simulation tab. Set the Simulated Start Time fields to the same values. Set the RF Output, RF Level to the same value. See Figure 5.

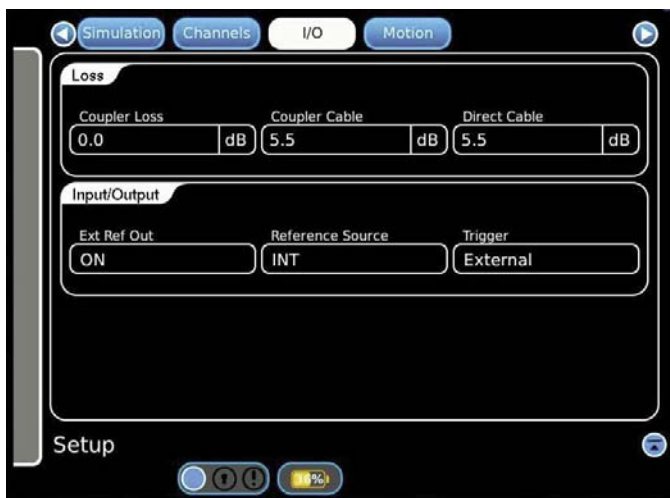


Figure 3

5. On GPSG-1000 #2 Menu Bar select Setup. On the Setup screen at the top row select the I/O tab. Set Ext Ref Out to OFF, Reference Source to EXT, and Trigger to External. See Figure 4.

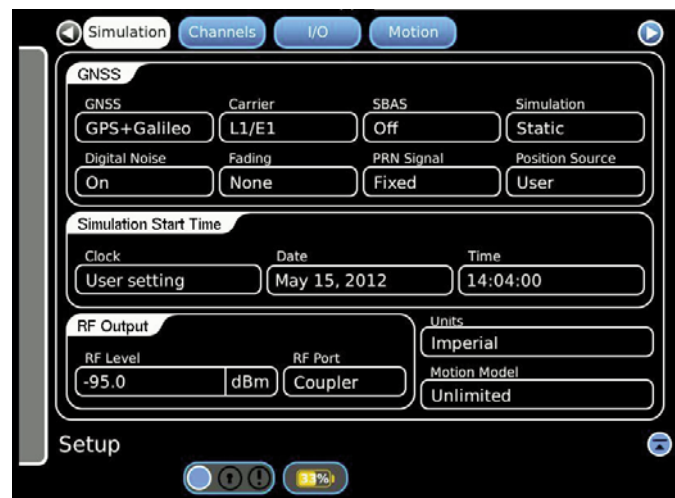


Figure 5

7. On the GPSG-1000 #1 Setup screen in the GNSS fields, set GNSS to GPS+Galileo and Carrier to L1/E1. See Figure 5.

8. On GPSG-1000 #2 Setup Screen in the GNSS fields, set GNSS and Carrier to the other required carrier type and frequency for your multi channel GPS LRU. See Figure 6.

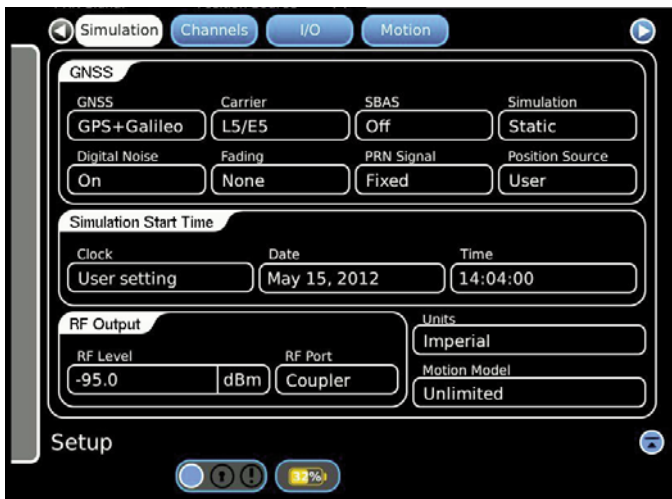


Figure 6

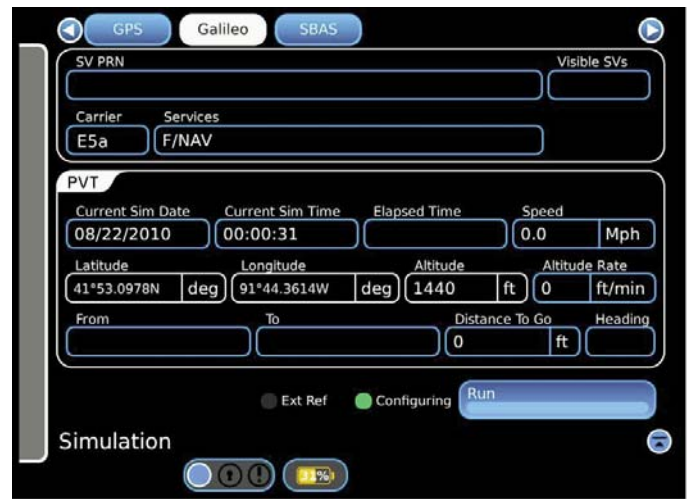


Figure 8

9. On both GPSG-1000 units Menu Bar select Simulation. On the Simulation screen PVT fields set the Latitude, Longitude, and Altitude fields to the same values. See Figure 7.

11. Using the Pulse Generator, send a single pulse to trigger the GPSG-1000 units. You should now note that the time and date data on the Simulation screen is updating and match on both units.

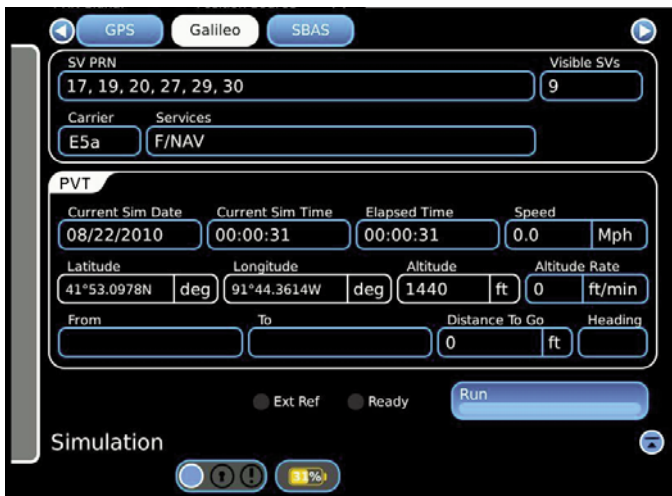


Figure 7

10. On both GPSG-1000 units Simulation screen press the Run switch. You should note that both GPSG-1000 units configure the simulation, but, the time and date data on the Simulation screen should not update. See Figure 8.

End of simulation set up.

### Simulation Troubleshooting

If the GPS receiver fails to identify its position after a suitable period for the receiver to acquire the signals, please perform the following troubleshooting steps.

1. Verify the GPSG-1000 units' connections and interface as per Figure 1.
2. Verify both GPSG-1000 units setup as per this Application Note.
3. Set the Oscilloscope, connected as per Figure 1, to measure the leading edges of the 1 PPS signal from both GPSG-1000 units. Note the difference between the points that both 1 PPS signals begin to rise from their 0 VDC states. The time difference should be less than 10 nSec.

Note: This step confirms that the GPSG-1000 units are operating in sync. If the time difference is not correct, then check the set up and try again.

**CHINA Beijing**

Tel: [+86] (10) 6539 1166  
Fax: [+86] (10) 6539 1778

**CHINA Shanghai**

Tel: [+86] 21 2028 3588  
Fax: [+86] 21 2028 3558

**CHINA Shenzhen**

Tel: [+86] (755) 3301 9358  
Fax: [+86] (755) 3301 9356

**FINLAND**

Tel: [+358] (9) 2709 5541  
Fax: [+358] (9) 804 2441

**FRANCE**

Tel: [+33] 1 60 79 96 00  
Fax: [+33] 1 60 77 69 22

**GERMANY**

Tel: [+49] 89 99641 0  
Fax: [+49] 89 99641 160

**HONG KONG**

Tel: [+852] 2832 7988  
Fax: [+852] 2834 5364

**INDIA**

Tel: [+91] 80 [4] 115 4501  
Fax: [+91] 80 [4] 115 4502

**JAPAN**

Tel: [+81] (3) 3500 5591  
Fax: [+81] (3) 3500 5592

**KOREA**

Tel: [+82] (2) 3424 2719  
Fax: [+82] (2) 3424 8620

**SCANDINAVIA**

Tel: [+45] 9614 0045  
Fax: [+45] 9614 0047

**SINGAPORE**

Tel: [+65] 6873 0991  
Fax: [+65] 6873 0992

**TAIWAN**

Tel: [+886] 2 2698 8058  
Fax: [+886] 2 2698 8050

**UK Stevenage**

Tel: [+44] (0) 1438 742200  
Fax: [+44] (0) 1438 727601  
Freephone: 0800 282388

**USA**

Tel: [+1] (316) 522 4981  
Fax: [+1] (316) 522 1360  
Toll Free: 800 835 2352

As we are always seeking to improve our products, the information in this document gives only a general indication of the product capacity, performance and suitability, none of which shall form part of any contract. We reserve the right to make design changes without notice. All trademarks are acknowledged. Parent company Aeroflex, Inc. ©Aeroflex 2011.

[www.aeroflex.com](http://www.aeroflex.com)  
[info-test@eroflex.com](mailto:info-test@eroflex.com)



Our passion for performance is defined by three attributes represented by these three icons: solution-minded, performance-driven and customer-focused.