

Kupuj tylko przez Meratronik S.A.!

W niniejszym katalogu zamieszczone są linki do produktów na stronach producenta. Zachęcamy jednak do bezpośrednich zakupów przez Meratronik S.A. Poniżej szereg korzyści:

- Ekspresowe pozyskiwanie ofert
- Procedury celne po naszej stronie
- Odroczone termin płatności
- Ciągła dostępność ponad 40 000 elementów
- Obsługa gwarancyjna i pogwarancyjna realizowana przez Meratronik S.A.
- Najniższy koszt transportu
- Dostawa już od 5 dni roboczych

Jak zamawiać?

- Wyszukaj interesujące Cię urządzenia lub akcesoria na stronie producenta lub w katalogu
- Skontaktuj się z nami przez zakładkę **"zapytaj o produkt"** znajdującą się na www.meratronik.pl przy każdej kategorii produktowej lub pisząc bezpośrednio na adres mailowy jm@meratronik.pl
- Chcesz zlecić nam dobór optymalnych rozwiązań?

Jesteśmy do Twojej dyspozycji

ZEAP MERATRONIK S.A.

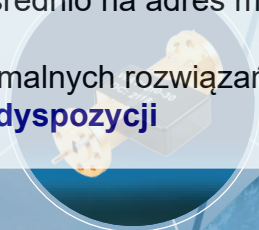
TEL: +48 22 855 34 32

FAX: +48 22 644 25 56

EMAIL: sales@meratronik.pl

WEB: www.meratronik.pl

2022
RF Product Guide



Attenuators and Equalizers Selection Guide

3 Easy Ways to Find your Product.....

1. Search by PE Part Number

If you know the PE part number you are searching for, please reference our Part Number Index on Page [395](#).

2. Quick Reference Guide

Attenuators & Equalizers

Attenuators.....	68
CMOS, Relay, TTL and USB Controlled Attenuators.....	85
Continuously Variable Attenuators	
50 Ohm.....	85
DC Bias Attenuators	
50 Ohm.....	84
75 Ohm.....	84
Fixed Attenuators	
50 Ohm.....	70
75 Ohm.....	82
Step Attenuators, Push Button	
50 Ohm.....	83
75 Ohm.....	83
Step Attenuators, Rotary	
50 Ohm.....	84
75 Ohm.....	84
Step Attenuators, Toggle	
75 Ohm.....	83
Voltage Variable Attenuators.....	85
Equalizers.....	86

3. Attenuators Locator

Connector In-Out	Max Freq.	Power	Model No.	Page		
1.85mm Male						
1.85mm Female	65 GHz	1 W	PE7403	70		
2.4mm Female						
2.4mm Female	40 GHz	0.25 W	PE70A6001	85		
2.4mm Male						
2.4mm Female	50 GHz	1 W	PE7089	70		
2.92mm Female						
2.92mm Female	18 GHz	0.25 W	PE70A5001	85		
		0.1 W	PE70A3901			
	40 GHz	0.25 W	PE70A5002			
2.92mm Male						
2.92mm Female	26.5 GHz	2 W	PE7024	71		
			PE7024/SP			
	40 GHz	0.5 W	PE7AP412		70	
			PE7046			
		PE7AP412				
		PE7088				
		PE7090				
		1 W	PE7395			71
		2 W	PE7395			72
		10 W	PE7AP402			75
4.3-10 Male						
4.3-10 Female	6 GHz	15 W	PE7AP1001	76		
7/16 DIN Female						
7/16 DIN Female	6 GHz	25 W	PE7380	76		
		50 W	PE7313	77		
		100 W	PE7204	79		
	7.5 GHz	25 W	PE7380	76		
				77		
		50 W	PE7313	78		

Connector In-Out	Max Freq.	Power	Model No.	Page
7/16 DIN Female				
7/16 DIN Male	6 GHz	50 W	PE7310	77
	7.5 GHz	50 W	PE7310	77
N Female	6 GHz	50 W	PE7316	78
		100 W	PE7212	80
	7.5 GHz	50 W	PE7316	78
N Male	18 GHz		PE7321	
	6 GHz	100 W	PE7207	80
7/16 DIN Male				
7/16 DIN Female	6 GHz	25 W	PE7379	76
		50 W	PE7312	77
		100 W	PE7203	79
	7.5 GHz	5 W	PE7039	74
		10 W	PE7040	75
		25 W	PE7041	76
			PE7379	
		50 W	PE7042	77
N Female	6 GHz	100 W	PE7211	79
BNC Female				
BNC Female	0.5 GHz	1 W	PE7008	83
			PE7035	84
	0.75 GHz	1 W	PE7008	83
			PE70A1021	
			PE7008	
	1 GHz	1 W	PE70A1001	84
			PE7034	
	2GHz	2 W	PE7035	84
			PE7034	
	2.2 GHz	2 W	PE70A1024	84
PE70A1022				

Attenuators Locator

Connector In-Out	Max Freq.	Power	Model No.	Page
BNC Male				
BNC Female	1 GHz	1 W	PE7009	82
		100 W	PE7026	80
	2 GHz	1 W	PE7000	70
		10 W	PE7025	75
4 GHz	2 W	PE7049	72	
			PE7050	82
F Female				
F Female	1 GHz	1 W	PE70A8003	85
			PE70A8004	
			PE70A1008	
	2.15 GHz	0 W	PE70A5011	85
	30 W	PE70A5012		
F Male				
F Female	1 GHz	2 W	PE7057	82
	2 GHz		PE7064	84
	3 GHz		PE7396	82
N Female				
7/16 DIN Female	6 GHz	25 W	PE7369	77
		50 W	PE7315	78
		100 W	PE7206	81
	7.5 GHz	25 W	PE7369	77
		50 W	PE7315	78
7/16 DIN Male	6 GHz	25 W	PE7370	76
		50 W	PE7311	78
		100 W	PE7202	81
	7.5 GHz	25 W	PE7370	76
		50 W	PE7311	78
		100 W	PE7323	79
N Female	6 GHz	100 W	PE7214	81
	8 GHz	25 W	PE7371	77
	18 GHz	50 W	PE7323	79
N Male	6 GHz	50 W	PE7317	79
	18 GHz	50 W	PE7317	79
TNC Female	18 GHz	25 W	PE7372	77
N Male				
7/16 DIN Female	6 GHz	25 W	PE7366	76
		50 W	PE7314	78
		100 W	PE7205	80
	7.5 GHz	25 W	PE7366	76
		50 W	PE7314	78
N Female	1 GHz	1 W	PE7029	82
		300 W	PE7031	
		500 W	PE7032	
	1.5 GHz	100 W	PE7021	80
	2 GHz	2 W	PE7062	84
		10 W	PE7010	75
	2.4 GHz	500 W	PE7085	82
	2.5 GHz	1000 W	PE7423	
	3 GHz	1 W	PE7002	71
		5 W	PE7390	74
		10 W	PE7386	75
		50 W	PE7388	78
100 W		PE7385	80	
200 W		PE7387	81	
4 GHz	500 W	PE7AP418	82	
	2 W	PE7044		
	25 W	PE7392	76	
6 GHz	50 W	PE7394	78	
	100 W	PE7421	80	
	5 W	PE7AP006	74	
8 GHz	50 W	PE7322	78	
	100 W	PE7213	80	
	25 W	PE7367	76	
8.5 GHz	150 W	PE7AP150	81	
12.4 GHz	250 W	PE7AP250	82	
	10 W	PE7048	75	
18 GHz	2 W	PE7004	72	
		PE7047		
	5 W	PE7014	74	
	10 W	PE7015	75	
	25 W	PE7017		
		PE7426	76	
18 GHz	25 W	PE7367		
		PE7019	78	
	50 W	PE7322	78	
	100 W	PE7424	80	
200 W		PE7AP200	82	
		PE7237	80	
TNC Female	6 GHz	100 W	PE7237	80
QMA Male				
QMA Female	6 GHz	1 W	PE7AP1002	71

Connector In-Out	Max Freq.	Power	Model No.	Page		
QN Male						
QN Female	3 GHz	1 W	PE7AP1000	71		
SMA Female						
SMA Female	1 GHz	0.5 W	PE70A8000	85		
		1 W	PE70A8001			
	1.5 GHz	1 W	PE70A8005			
	2 GHz	0.5 W	PE70A8002			
		2 W	PE70A1025	84		
		2 W	PE70A1023			
		10 W	PE70A1031			
	3 GHz	0 W	PE70A5004	85		
			PE70A5006			
			PE70A5005			
			PE70A5007			
			PE70A5008			
			PE70A2000			
	4 GHz	5 W	PE7422	85		
			PE70A1000			
	6 GHz	0 W	PE70A5009	85		
			PE70A5010			
			PE70A5013			
			PE70A5011			
			PE70A3902			
		0.1 W	PE70A5000			
		100 W	PE7228	81		
	8 GHz	0 W	PE70A2001			
	12 GHz	0 W	PE70A2002	85		
13 GHz	0.16 W	PE70A4000				
	0.32 W	PE70A5003	85			
18 GHz	0 W	PE70A2003	86			
	0.1 W	PE70A3900				
	1 W	PE70A6000				
	20 W	PE70A2900				
	25 W	PE7363		77		
	50 W	PE7337		79		
20 GHz	18 W	PE70A1017	85			
SMA Male	6 GHz	100 W	PE7221	81		
SMA Male						
SMA Female	1.5 GHz	100 W	PE7022	81		
	2 GHz	1 W	PE7161	71		
		2 W	PE7061	84		
	3 GHz	2 W	PE7001	72		
		5 W	PE7391	74		
	4 GHz	25 W	PE7393	77		
		6 GHz	2 W	PE70A1009	72	
	PE70A1010					
	PE70A1011					
	PE70A1012					
	PE70A1014					
	PE70A1015					
			PE7091	73		
			PE7162			
		10 W	PE7428	75		
		25 W	PE7357	77		
		100 W	PE7227	81		
	12.4 GHz	2 W	PE7045	73		
			PE7005			
	18 GHz	2 W	PE7092	75		
			PE7013			
			10 W		PE7016	76
			25 W		PE7018	77
		50 W	PE7357			
	50 W	PE7020	79			
	100 W	PE7427	81			
	100 W	PE7425	81			
	2 W	PE7087	73			
			74			
TNC Female						
N Female	6 GHz	100 W	PE7218	81		
N Male	6 GHz	100 W	PE7210	81		
TNC Female	18 GHz	50 W	PE7351	79		
TNC Male						
TNC Female	1.5 GHz	100 W	PE7056	81		
		1 W	PE7003	71		
	2 GHz	2 W	PE7063	84		
			PE7051	74		
	12.4 GHz	2 W	PE7030	74		
			5 W	PE7052	75	
	18 GHz	2 W	PE7053	76		
			5 W	PE7054	77	
			10 W	PE7053	76	
			25 W	PE7375	77	
		50 W	PE7055	79		

Attenuators & Equalizers



Technical Support
+1 (949) 261-1920



Same-Day Shipping,
Even Custom
Cable Assemblies

PASSIVE ATTENUATORS

Fixed Attenuators

50 Ohm



Attenuators & Equalizers

See Our Website For Current Pricing & Real-Time Stock Availability!

Max. Power (Watts)	Connector Input	Connector Output	Max. Freq.	Construction Material	VSWR Max.	Bi-Dir.*	ATTN. (dB)	Model No	1 Pc. Price	See Web for Volume Pricing	ROW
0.5 W	2.92mm Male	2.92mm Female	40 GHz	Passivated Stainless Steel	1.4:1		0	PE7AP412-00	\$253.32	See Web for Volume Pricing	1
							1	PE7AP412-01	\$253.12		
							2	PE7AP412-02	\$253.12		
							3	PE7AP412-03	\$252.23		
						Yes	3	PE7046-3	\$504.51		
						Yes	6	PE7046-6	\$504.51		
						Yes	10	PE7046-10	\$488.43		
						Yes	20	PE7046-20	\$497.06		
						Yes	30	PE7046-30	\$504.51		
							4	PE7AP412-04	\$274.04		
						5	PE7AP412-05	\$263.77			
						6	PE7AP412-06	\$268.53			
						8	PE7AP412-08	\$278.86			
						9	PE7AP412-09	\$264.42			
						10	PE7AP412-10	\$274.04			
						12	PE7AP412-12	\$259.87			
						15	PE7AP412-15	\$259.87			
						20	PE7AP412-20	\$274.04			
						30	PE7AP412-30	\$273.14			
					1 W	1.85mm Male	1.85mm Female	65 GHz	Passivated Stainless Steel		1.65:1
	2	PE7403-2	\$758.96								
	3-3	PE7403-3	\$662.31								
	4	PE7403-4	\$719.68								
	5	PE7403-5	\$730.46								
	6-6	PE7403-6	\$650.47								
	7	PE7403-7	\$719.68								
	8	PE7403-8	\$719.68								
	9	PE7403-9	\$719.68								
	10-10	PE7403-10	\$652.53								
	20-20	PE7403-20	\$662.60								
	30-30	PE7403-30	\$684.54								
Yes	10	PE7089-10	\$411.39								
Yes	12	PE7089-12	\$411.39								
Yes	15	PE7089-15	\$411.39								
Yes	20	PE7089-20	\$411.19								
Yes	30	PE7089-30	\$410.27								
Yes	0	PE7089-0	\$390.10								
Yes	1	PE7089-1	\$411.39								
Yes	2	PE7089-2	\$411.39								
Yes	3	PE7089-3	\$399.76								
Yes	4	PE7089-4	\$390.10								
Yes	5	PE7089-5	\$395.94								
Yes	6	PE7089-6	\$405.47								
Yes	7	PE7089-7	\$390.10								
Yes	8	PE7089-8	\$411.39								
Yes	9	PE7089-9	\$395.94								
Yes	0	PE7088-0	\$352.53								
Yes	1	PE7088-1	\$336.52								
Yes	2	PE7088-2	\$336.52								
Yes	3	PE7088-3	\$309.00								
Yes	4	PE7088-4	\$352.53								
Yes	5	PE7088-5	\$352.53								
Yes	6	PE7088-6	\$308.78								
Yes	7	PE7088-7	\$352.53								
Yes	8	PE7088-8	\$352.53								
Yes	9	PE7088-9	\$347.33								
Yes	10	PE7088-10	\$315.94								
Yes	12	PE7088-12	\$352.53								
Yes	15	PE7088-15	\$336.52								
Yes	20	PE7088-20	\$308.78								
Yes	30	PE7088-30	\$331.55								
Yes	1	PE7000-1	\$56.38								
Yes	2	PE7000-2	\$57.46								
Yes	3	PE7000-3	\$59.92								
Yes	6	PE7000-6	\$58.36								
Yes	10	PE7000-10	\$56.79								
Yes	20	PE7000-20	\$55.73								
Yes	30	PE7000-30	\$58.36								
	BNC Male	BNC Female	2 GHz	Nickel Plated Brass	1.2:1						7

* Bi-Dir is Bi-Directional. If No then Attenuator is Directional. Maximum power applies to input connector only.

Fixed Attenuators

50 Ohm



Max. Power (Watts)	Connector Input	Connector Output	Max. Freq.	Construction Material	VSWR Max.	Bi-Dir.*	ATTN. (dB)	Model No	1 Pc. Price	See Web for Volume Pricing	ROW		
1 W	N Male	N Female	3 GHz	Nickel Plated Brass	1.2:1	Yes	1	PE7002-1	\$103.53	See Web for Volume Pricing	8		
						Yes	2	PE7002-2	\$103.53				
						Yes	3	PE7002-3	\$91.19				
						Yes	6	PE7002-6	\$93.19				
						Yes	10	PE7002-10	\$91.20				
						Yes	20	PE7002-20	\$93.19				
						Yes	30	PE7002-30	\$93.19				
	Yes	40	PE7002-40	\$103.53									
	QMA Male	QMA Female	6 GHz	Tri-Metal Plated Brass	1.2:1		12	PE7AP1002-12	\$96.65				
							15	PE7AP1002-15	\$100.42				
							0	PE7AP1002-0	\$100.42				
							20	PE7AP1002-20	\$100.42				
							1	PE7AP1002-1	\$96.65				
							2	PE7AP1002-2	\$96.65				
							3	PE7AP1002-3	\$96.65				
							6	PE7AP1002-6	\$100.42				
							9	PE7AP1002-9	\$100.42				
							0	PE7AP1000-0	\$133.67				
	QN Male	QN Female	3 GHz	Tri-Metal Plated Brass	1.2:1		1	PE7AP1000-1	\$133.67				
							2	PE7AP1000-2	\$133.67				
							3	PE7AP1000-3	\$133.67				
							6	PE7AP1000-6	\$140.96				
							9	PE7AP1000-9	\$140.96				
							12	PE7AP1000-12	\$133.67				
							15	PE7AP1000-15	\$133.67				
							18	PE7AP1000-18	\$133.67				
							20	PE7AP1000-20	\$140.96				
						SMA Male	SMA Female	2 GHz	Passivated Stainless Steel			1.2:1	Yes
Yes	2	PE7161-2	\$72.58										
Yes	3	PE7161-3	\$70.08										
Yes	4	PE7161-4	\$73.97										
Yes	5	PE7161-5	\$72.58										
Yes	6	PE7161-6	\$66.23										
Yes	8	PE7161-8	\$57.90										
Yes	9	PE7161-9	\$60.51										
Yes	10	PE7161-10	\$71.11										
Yes	12	PE7161-12	\$64.85										
Yes	20	PE7161-20	\$69.20										
Yes	30	PE7161-30	\$71.11										
Yes	40	PE7161-40	\$74.60										
TNC Male	TNC Female		Nickel Plated Brass	1.2:1	Yes					1	PE7003-1		\$90.57
					Yes					10	PE7003-10		\$83.09
					Yes	20	PE7003-20	\$77.80					
					Yes	30	PE7003-30	\$85.37					
					Yes	40	PE7003-40	\$86.25					
					2 W	2.92mm Male	26.5 GHz	Passivated Stainless Steel	1.4:1	Yes	1	PE7024-1	\$331.65
										Yes	2	PE7024-2	\$331.65
Yes	3	PE7024-3	\$321.92										
Yes	6	PE7024-6	\$321.92										
Yes	10	PE7024-10	\$314.06										
Yes	20	PE7024-20	\$321.92										
Yes	30	PE7024-30	\$315.62										
Yes	30	PE7024/SP-30	\$216.75										
Yes	3	PE7090-3	\$464.91										
Yes	10	PE7090-10	\$433.91										
Yes	15	PE7090-15	\$464.91										
Yes	20	PE7090-20	\$433.91										
Yes	30	PE7090-30	\$419.40										
Passivated Stainless Steel	40 GHz	1.6:1		0-0			PE7395-0	\$200.00					
				1-1	PE7395-1	\$205.49							
				2-2	PE7395-2	\$205.49							
				3-3	PE7395-3	\$199.97							
				4-4	PE7395-4	\$198.85							
				5-5	PE7395-5	\$198.85							
				6-6	PE7395-6	\$196.81							
				7-7	PE7395-7	\$235.03							
				8-8	PE7395-8	\$235.03							
				9-9	PE7395-9	\$198.85							
	10-10	PE7395-10	\$199.97										
	12-12	PE7395-12	\$211.57										

* Bi-Dir is Bi-Directional. If No then Attenuator is Directional. Maximum power applies to input connector only.

Attenuators & Equalizers

See Our Website For Current Pricing & Real-Time Stock Availability!



Technical Support
+1 (949) 261-1920



Same-Day Shipping,
Even Custom
Cable Assemblies

Fixed Attenuators

50 Ohm



Max. Power (Watts)	Connector Input	Connector Output	Max. Freq.	Construction Material	VSWR Max.	Bi-Dir.*	ATTN. (dB)	Model No	1 Pc. Price	See Web for Volume Pricing	ROW	
2 W	2.92mm Male	2.92mm Female	40 GHz	Passivated Stainless Steel	1.6:1		15-15	PE7395-15	\$202.28	See Web for Volume Pricing	16	
							20-20	PE7395-20	\$205.49			
	BNC Male	BNC Female	4 GHz	Nickel Plated Brass	1.25:1	Yes	1	PE7049-1	\$126.44		17	
						Yes	2	PE7049-2	\$125.81			
						Yes	3	PE7049-3	\$119.55			
						Yes	6	PE7049-6	\$119.55			
						Yes	10	PE7049-10	\$130.02			
						Yes	20	PE7049-20	\$119.55			
	N Male	N Female	18 GHz	Passivated Stainless Steel	1.35:1	Yes	30	PE7004-30	\$120.15		18	
						Yes	1	PE7004-1	\$236.44			
						Yes	2	PE7004-2	\$235.44			
						Yes	3	PE7004-3	\$220.09			
						Yes	4	PE7004-4	\$235.44			
						Yes	5	PE7004-5	\$236.44			
						Yes	6	PE7004-6	\$216.63			
Yes						7	PE7004-7	\$232.94				
Yes						8	PE7004-8	\$190.55				
Yes						9	PE7004-9	\$207.70				
Yes						10	PE7004-10	\$202.65				
Yes						12	PE7004-12	\$222.99				
Yes						15	PE7004-15	\$228.46				
Yes						20	PE7004-20	\$220.09				
SMA Male	SMA Female	6 GHz	Copper	1.22:1		3	PE70A1009	\$150.86	19			
						3	PE70A1010	\$60.24				
						6	PE70A1011	\$159.67				
						6	PE70A1012	\$60.24				
			Brass			12	PE70A1014	\$60.24				
						16	PE70A1015	\$65.60				
					3 GHz	Passivated Stainless Steel	1.2:1	Yes		1	PE7001-1	\$100.76
								Yes		2	PE7001-2	\$100.76
		Yes		3				PE7001-3		\$89.93		
		Yes		4				PE7001-4		\$98.93		
		Yes	5	PE7001-5				\$103.53				
		Yes	6	PE7001-6				\$94.95				
		6 GHz	Passivated Stainless Steel	1.35:1	Yes	7	PE7001-7	\$103.53				
					Yes	8	PE7001-8	\$84.77				
Yes	9				PE7001-9	\$94.95						
Yes	10				PE7001-10	\$93.41						
Yes	12				PE7001-12	\$94.95						
Yes	15				PE7001-15	\$94.95						
Yes	20				PE7001-20	\$93.41						
Yes	30				PE7001-30	\$94.95						
Yes	40	PE7001-40	\$103.53									
SMA Male	SMA Female	6 GHz	Passivated Stainless Steel	1.35:1	Yes	0	PE7091-0	\$42.24	20			
					Yes	1	PE7091-1	\$46.55				
					Yes	2	PE7091-2	\$51.47				
					Yes	3	PE7091-3	\$39.84				
					Yes	4	PE7091-4	\$51.47				
					Yes	5	PE7091-5	\$51.41				
					Yes	6	PE7091-6	\$43.09				
					Yes	7	PE7091-7	\$51.47				
					Yes	10	PE7091-10	\$46.75				
					Yes	12	PE7091-12	\$45.62				
Yes	15	PE7091-15	\$44.76									
										21		
											22	
											23	
											24	
											25	
											26	
											27	

* Bi-Dir is Bi-Directional. If No then Attenuator is Directional. Maximum power applies to input connector only.

Attenuators & Equalizers

See Our Website For Current Pricing & Real-Time Stock Availability!

Fixed Attenuators

50 Ohm



Max. Power (Watts)	Connector Input	Connector Output	Max. Freq.	Construction Material	VSWR Max.	Bi-Dir.*	ATTN. (dB)	Model No	1 Pc. Price	See Web for Volume Pricing	ROW
2 W	SMA Male	SMA Female	6 GHz	Passivated Stainless Steel	1.35:1	Yes	20	PE7091-20	\$45.02	See Web for Volume Pricing	27
						Yes	30	PE7091-30	\$46.78		
						Yes	40	PE7091-40	\$57.05		
						Yes	1	PE7162-1	\$53.71		
						Yes	2	PE7162-2	\$53.60		
						Yes	3	PE7162-3	\$29.56		
						Yes	4	PE7162-4	\$52.64		
						Yes	5	PE7162-5	\$53.29		
						Yes	6	PE7162-6	\$33.67		
						Yes	7	PE7162-7	\$49.72		
						Yes	8	PE7162-8	\$49.72		
						Yes	9	PE7162-9	\$45.52		
						Yes	10	PE7162-10	\$39.97		
						Yes	12	PE7162-12	\$47.36		
						Yes	15	PE7162-15	\$48.26		
						Yes	20	PE7162-20	\$39.80		
						Yes	30	PE7162-30	\$47.44		
						Yes	40	PE7162-40	\$54.74		
						Yes	1	PE7045-1	\$137.46		
						Yes	2	PE7045-2	\$135.80		
			Yes		3	PE7045-3	\$123.34				
			Yes		4	PE7045-4	\$124.58				
			Yes		5	PE7045-5	\$137.46				
			Yes		6	PE7045-6	\$124.86				
			Yes		7	PE7045-7	\$117.10				
			Yes		8	PE7045-8	\$104.97				
			Yes		9	PE7045-9	\$117.10				
			Yes		10	PE7045-10	\$122.05				
			Yes		12	PE7045-12	\$117.10				
			Yes		15	PE7045-15	\$126.73				
			Yes		20	PE7045-20	\$126.73				
			Yes		30	PE7045-30	\$126.73				
			Yes		40	PE7045-40	\$134.15				
			Yes		1	PE7005-1	\$74.13				
			Yes		2	PE7005-2	\$69.20				
			Yes		3	PE7005-3	\$67.46				
			Yes		4	PE7005-4	\$81.15				
			Yes		5	PE7005-5	\$75.52				
			Yes		6	PE7005-6	\$71.39				
			Yes		7	PE7005-7	\$82.03				
Yes	8	PE7005-8	\$82.03								
Yes	9	PE7005-9	\$72.73								
Yes	10	PE7005-10	\$67.46								
Yes	12	PE7005-12	\$76.37								
Yes	15	PE7005-15	\$67.35								
Yes	20	PE7005-20	\$66.97								
Yes	30	PE7005-30	\$69.30								
Yes	40	PE7005-40	\$79.79								
Yes	1	PE7092-1	\$51.41								
Yes	2	PE7092-2	\$51.41								
Yes	3	PE7092-3	\$44.10								
Yes	4	PE7092-4	\$52.80								
Yes	5	PE7092-5	\$53.06								
Yes	6	PE7092-6	\$46.75								
Yes	7	PE7092-7	\$52.63								
Yes	8	PE7092-8	\$49.82								
Yes	9	PE7092-9	\$44.76								
Yes	10	PE7092-10	\$46.75								
Yes	12	PE7092-12	\$45.62								
Yes	15	PE7092-15	\$51.65								
Yes	20	PE7092-20	\$46.75								
Yes	30	PE7092-30	\$45.68								
Yes	40	PE7092-40	\$67.77								
Yes	0	PE7087-0	\$109.45								
Yes	1	PE7087-1	\$123.16								
Yes	2	PE7087-2	\$123.16								
Yes	3	PE7087-3	\$104.36								
Yes	4	PE7087-4	\$122.07								
Yes	5	PE7087-5	\$120.26								
Yes	6	PE7087-6	\$107.86								
			18 GHz		1.35:1						30
			26 GHz		1.4:1						32

* Bi-Dir is Bi-Directional. If No then Attenuator is Directional. Maximum power applies to input connector only.



Technical Support
+1 (949) 261-1920



Same-Day Shipping,
Even Custom
Cable Assemblies

Attenuators & Equalizers

See Our Website For Current Pricing & Real-Time Stock Availability!

Fixed Attenuators

50 Ohm



Max. Power (Watts)	Connector Input	Connector Output	Max. Freq.	Construction Material	VSWR Max.	Bi-Dir.*	ATTN. (dB)	Model No	1 Pc. Price	See Web for Volume Pricing	ROW				
2 W	SMA Male	SMA Female	26 GHz	Passivated Stainless Steel	1.4:1	Yes	7	PE7087-7	\$122.07	See Web for Volume Pricing	32				
						Yes	8	PE7087-8	\$122.07						
						Yes	9	PE7087-9	\$115.22						
						Yes	10	PE7087-10	\$106.27						
						Yes	12	PE7087-12	\$116.59						
						Yes	15	PE7087-15	\$123.16						
						Yes	20	PE7087-20	\$107.86						
	TNC Male	TNC Female	2 GHz	Nickel Plated Brass	1.15:1	Yes	2	PE7003-2	\$80.80		33				
						Yes	3	PE7003-3	\$76.22						
						Yes	6	PE7003-6	\$85.37						
						Yes	1	PE7051-1	\$185.62						
						Yes	2	PE7051-2	\$185.62						
						Yes	3	PE7051-3	\$165.22						
						Yes	6	PE7051-6	\$169.98						
			12.4 GHz	Nickel Plated Brass	1.25:1	Yes	10	PE7051-10	\$170.96		34				
						Yes	20	PE7051-20	\$189.48						
						Yes	30	PE7051-30	\$183.88						
						Yes	40	PE7051-40	\$170.29						
						18 GHz	Passivated Stainless Steel	1.35:1	Yes			1	PE7030-1	\$268.86	35
									Yes			2	PE7030-2	\$307.42	
									Yes			3	PE7030-3	\$319.42	
Yes	6	PE7030-6	\$319.42												
Yes	10	PE7030-10	\$319.42												
Yes	20	PE7030-20	\$322.63												
Yes	30	PE7030-30	\$293.06												
7/16 DIN Male	7/16 DIN Female	7.5 GHz	Tri-Metal Plated Brass	1.25:1	Yes	3	PE7039-3	\$224.06	36						
					Yes	6	PE7039-6	\$224.06							
					Yes	10	PE7039-10	\$244.23							
					Yes	20	PE7039-20	\$224.06							
					Yes	30	PE7039-30	\$291.03							
					N Male	N Female	3 GHz	Aluminum		1.2:1	Yes	1	PE7390-1	\$74.15	37
Yes	2	PE7390-2	\$74.15												
Yes	3	PE7390-3	\$69.28												
Yes	6	PE7390-6	\$69.28												
Yes	10	PE7390-10	\$69.48												
Yes	15	PE7390-15	\$68.36												
Yes	20	PE7390-20	\$69.28												
6 GHz	Black Anodized Aluminum Heatsink	1.25:1	Yes	30			PE7390-30	\$67.98	38						
			Yes	1			PE7AP006-01	\$114.40							
			Yes	2			PE7AP006-02	\$118.87							
			Yes	3			PE7AP006-03	\$113.15							
			Yes	4			PE7AP006-04	\$118.87							
			Yes	5			PE7AP006-05	\$118.87							
			Yes	6			PE7AP006-06	\$113.15							
18 GHz	Black Anodized Aluminum Heatsink	1.4:1	Yes	9	PE7AP006-09	\$109.78	39								
			Yes	10	PE7AP006-10	\$114.06									
			Yes	12	PE7AP006-12	\$109.78									
			Yes	15	PE7AP006-15	\$103.40									
			Yes	20	PE7AP006-20	\$144.56									
			Yes	30	PE7AP006-30	\$114.06									
			Yes	40	PE7AP006-40	\$125.48									
SMA Male	SMA Female	3 GHz	Aluminum	1.2:1	Yes	1	PE7014-1	\$318.86	40						
					Yes	2	PE7014-2	\$318.86							
					Yes	3	PE7014-3	\$335.10							
					Yes	6	PE7014-6	\$335.10							
					Yes	10	PE7014-10	\$328.96							
					Yes	20	PE7014-20	\$335.10							
					Yes	30	PE7014-30	\$328.96							
					Yes	40	PE7014-40	\$347.55							
					Black Anodized Aluminum Heatsink	Yes	1	PE7391-1		\$71.84					
						Yes	2	PE7391-2		\$74.15					
Yes	3	PE7391-3	\$68.36												
Aluminum	Yes	6	PE7391-6	\$68.36											
	Yes	10	PE7391-10	\$68.36											
	Yes	15	PE7391-15	\$68.36											
Aluminum	Yes	20	PE7391-20	\$69.28											
	Yes	30	PE7391-30	\$67.98											

* Bi-Dir is Bi-Directional. If No then Attenuator is Directional. Maximum power applies to input connector only.

Attenuators & Equalizers

See Our Website For Current Pricing & Real-Time Stock Availability!

Fixed Attenuators

50 Ohm



Max. Power (Watts)	Connector Input	Connector Output	Max. Freq.	Construction Material	VSWR Max.	Bi-Dir.*	ATTN. (dB)	Model No	1 Pc. Price	See Web for Volume Pricing	ROW
5 W	SMA Male	SMA Female	18 GHz	Black Anodized Aluminum Heatsink	1.35:1	Yes	1	PE7013-1	\$188.98	See Web for Volume Pricing	41
						Yes	2	PE7013-2	\$198.07		
						Yes	3	PE7013-3	\$178.05		
						Yes	6	PE7013-6	\$182.82		
						Yes	10	PE7013-10	\$178.26		
						Yes	20	PE7013-20	\$183.18		
						Yes	30	PE7013-30	\$178.05		
	Yes	40	PE7013-40	\$199.07							
	TNC Male	TNC Female	18 GHz	Black Anodized Aluminum Heatsink	1.35:1	Yes	1	PE7052-1	\$317.64		
						Yes	2	PE7052-2	\$330.35		
						Yes	3	PE7052-3	\$330.35		
						Yes	6	PE7052-6	\$330.35		
						Yes	10	PE7052-10	\$330.35		
						Yes	20	PE7052-20	\$330.35		
Yes						30	PE7052-30	\$330.28			
10 W	2.92mm Male	2.92mm Female	40 GHz	Black Anodized Aluminum Heatsink	1.5:1	No	10	PE7AP402-10	\$1,039.72		
						No	20	PE7AP402-20	\$984.98		
						Yes	3	PE7AP402-3	\$1,022.76		
	7/16 DIN Male	7/16 DIN Female	7.5 GHz	Black Anodized Aluminum Heatsink	1.45:1	Yes	6	PE7AP402-6	\$1,022.73		
						No	30	PE7AP402-30	\$1,039.72		
	BNC Male	BNC Female	2 GHz	Black Anodized Aluminum Heatsink	1.6:1	Yes	6	PE7040-6	\$318.76		
						Yes	10	PE7040-10	\$368.21		
						Yes	20	PE7040-20	\$209.29		
						Yes	2	PE7025-2	\$341.71		
						Yes	3	PE7025-3	\$360.01		
						Yes	6	PE7025-6	\$343.50		
						Yes	10	PE7025-10	\$353.41		
						Yes	20	PE7025-20	\$348.19		
						Yes	30	PE7025-30	\$336.87		
Yes						40	PE7025-40	\$395.19			
Yes						2	PE7010-2	\$250.28			
N Male	N Female	2 GHz	Black Anodized Aluminum Heatsink	1.6:1	Yes	3	PE7010-3	\$261.35			
					Yes	6	PE7010-6	\$261.35			
					Yes	10	PE7010-10	\$261.35			
					Yes	20	PE7010-20	\$261.35			
					Yes	30	PE7010-30	\$260.37			
					Yes	40	PE7010-40	\$217.67			
					Yes	3	PE7386-3	\$156.51			
					Yes	6	PE7386-6	\$158.86			
					Yes	10	PE7386-10	\$158.86			
					Yes	15	PE7386-15	\$130.63			
					Yes	20	PE7386-20	\$158.86			
N Male	N Female	12.4 GHz	Black Anodized Aluminum Heatsink	1.35:1	Yes	30	PE7386-30	\$158.86			
					Yes	40	PE7386-40	\$170.29			
					Yes	1	PE7048-1	\$414.54			
					Yes	2	PE7048-2	\$414.54			
					Yes	3	PE7048-3	\$409.84			
		18 GHz			1.4:1	18 GHz	Yes	6	PE7048-6	\$408.25	
							Yes	10	PE7048-10	\$402.32	
							Yes	20	PE7048-20	\$402.92	
							Yes	30	PE7048-30	\$391.98	
							Yes	40	PE7048-40	\$402.92	
							Yes	1	PE7015-1	\$314.13	
SMA Male	SMA Female	6 GHz	Black Anodized Aluminum Heatsink	1.2:1	Yes	2	PE7015-2	\$328.49			
					Yes	3	PE7015-3	\$402.92			
					Yes	6	PE7015-6	\$403.87			
					Yes	10	PE7015-10	\$396.97			
					Yes	20	PE7015-20	\$390.26			
		18 GHz			1.4:1	18 GHz	Yes	30	PE7015-30	\$403.87	
							Yes	40	PE7015-40	\$414.81	
								1	PE7428-01	\$185.89	
								2	PE7428-02	\$170.49	
								3	PE7428-03	\$166.12	
								6	PE7428-06	\$219.12	
	10	PE7428-10	\$172.60								
	15	PE7428-15	\$172.60								
	20	PE7428-20	\$172.60								
	30	PE7428-30	\$172.60								
	Yes	1	PE7016-1	\$402.32							
	Yes	2	PE7016-2	\$367.67							

* Bi-Dir is Bi-Directional. If No then Attenuator is Directional. Maximum power applies to input connector only.

Attenuators & Equalizers

See Our Website For Current Pricing & Real-Time Stock Availability!



Technical Support
+1 (949) 261-1920



Same-Day Shipping,
Even Custom
Cable Assemblies

Fixed Attenuators

50 Ohm



Max. Power (Watts)	Connector Input	Connector Output	Max. Freq.	Construction Material	VSWR Max.	Bi-Dir.*	ATTN. (dB)	Model No	1 Pc. Price	See Web for Volume Pricing	ROW
10 W	SMA Male	SMA Female	18 GHz	Black Anodized Aluminum Heatsink	1.4:1	Yes	3	PE7016-3	\$380.10	See Web for Volume Pricing	51
						Yes	6	PE7016-6	\$372.79		
						Yes	10	PE7016-10	\$371.17		
						Yes	20	PE7016-20	\$372.98		
	Yes	30				PE7016-30	\$380.10				
	Yes	40				PE7016-40	\$402.92				
	Yes	6				PE7053-6	\$461.14				
	Yes	10				PE7053-10	\$472.16				
TNC Male	TNC Female	Yes	20	PE7053-20	\$513.28						
		Yes	40	PE7053-40	\$505.56						
		Yes	10	PE7AP1001-10	\$342.85						
		Yes	3	PE7AP1001-3	\$312.38						
15 W	4.3-10 Male	4.3-10 Female	6 GHz	Aluminum	1.15:1	Yes	6	PE7AP1001-6	\$312.38		52
						Yes	20	PE7AP1001-20	\$312.38		53
						Yes	50	PE7AP1001-50	\$312.38		53
25 W	7/16 DIN Male	7/16 DIN Female	6 GHz	Black Anodized Aluminum Heatsink	1.3:1	Yes	3	PE7379-3	\$473.89		54
			Yes			10	PE7041-10	\$618.25	55		
			Yes			10	PE7379-10	\$619.79	55		
			Yes			20	PE7379-20	\$497.10	56		
			Yes			30	PE7379-30	\$473.89			
			Yes			40	PE7379-40	\$473.89			
			Yes			3	PE7379-3	\$480.99			
			Yes			6	PE7379-6	\$473.89	57		
	7/16 DIN Female	7/16 DIN Female	7.5 GHz		1.45:1	Yes	50	PE7380-50			\$480.74
						Yes	3	PE7380-3		\$480.74	
						Yes	6	PE7380-6		\$480.74	
						Yes	10	PE7380-10		\$480.74	
						Yes	20	PE7380-20		\$480.74	
						Yes	30	PE7380-30		\$480.74	
						Yes	40	PE7380-40		\$480.74	
						Yes	50	PE7366-50	\$419.53	58	
	6 GHz	1.3:1	Yes		10	PE7366-10	\$419.53				
			Yes		20	PE7366-20	\$419.53				
			Yes		30	PE7366-30	\$442.42				
			Yes		40	PE7366-40	\$442.42				
			Yes		3	PE7366-3	\$419.53				
			Yes		6	PE7366-6	\$419.53				
			Yes		1	PE7392-1	\$227.43				
			Yes		2	PE7392-2	\$227.43				
	4 GHz	1.25:1	Yes		3	PE7392-3	\$213.25				
			Yes		6	PE7392-6	\$216.00				
			Yes		10	PE7392-10	\$216.00				
			Yes		20	PE7392-20	\$216.91				
			Yes		30	PE7392-30	\$216.91				
			Yes		40	PE7392-40	\$227.43				
			Yes		50	PE7367-50	\$490.27				
			Yes		1	PE7017-1	\$581.34	59			
8 GHz	1.6:1	Yes	2	PE7017-2	\$670.51						
		Yes	3	PE7017-3	\$590.05						
		Yes	6	PE7017-6	\$585.68						
		Yes	10	PE7017-10	\$590.05						
		Yes	20	PE7017-20	\$581.34						
		Yes	30	PE7017-30	\$590.05						
		Yes	40	PE7017-40	\$684.32						
		Yes	3	PE7426-03	\$340.76						
N Male	N Female	18 GHz	1.35:1	Yes	6	PE7426-06	\$346.26	60			
				Yes	10	PE7367-10	\$485.57	61			
				Yes	10	PE7426-10	\$354.45				
				Yes	20	PE7367-20	\$485.57	62			
				Yes	20	PE7426-20	\$360.08				
				Yes	30	PE7367-30	\$473.72	63			
				Yes	30	PE7426-30	\$346.23				
				Yes	40	PE7367-40	\$490.27	64			
				Yes	40	PE7426-40	\$371.34				
				Yes	3	PE7367-3	\$485.57	65			
				Yes	6	PE7367-6	\$485.57				
				N Female	7/16 DIN Male	7.5 GHz	1.45:1	Yes	50	PE7370-50	\$411.23
Yes	3	PE7370-3	\$411.23								
Yes	6	PE7370-6	\$411.23								
Yes	10	PE7370-10	\$411.23								
Yes	20	PE7370-20	\$411.23								
Yes	3	PE7370-3	\$411.23					67			
Yes	6	PE7370-6	\$411.23								
Yes	10	PE7370-10	\$411.23					68			
Yes	20	PE7370-20	\$411.23								

* Bi-Dir is Bi-Directional. If No then Attenuator is Directional. Maximum power applies to input connector only.

Attenuators & Equalizers

See Our Website For Current Pricing & Real-Time Stock Availability!

Fixed Attenuators

50 Ohm



Max. Power (Watts)	Connector Input	Connector Output	Max. Freq.	Construction Material	VSWR Max.	Bi-Dir.*	ATTN. (dB)	Model No	1 Pc. Price	See Web for Volume Pricing	ROW						
25 W	N Female	7/16 DIN Male	7.5 GHz	Black Anodized Aluminum Heatsink	1.45:1	Yes	30	PE7370-30	\$411.23	See Web for Volume Pricing	72						
			6 GHz		1.3:1	Yes	40	PE7370-40	\$411.23		73						
			7.5 GHz		1.45:1	Yes	50	PE7369-50	\$418.08		74						
		SMA Male	N Female		8 GHz	18 GHz	1.6:1	Yes	10		PE7371-10	\$393.24	75				
							1.45:1	Yes	10		PE7371-10	\$461.11	76				
							1.6:1	Yes	3		PE7371-3	\$461.11	77				
			SMA Female		SMA Female	18 GHz	1.6:1	Yes	6		PE7371-6	\$461.11	78				
								Yes	20		PE7371-20	\$460.57	79				
								Yes	30		PE7371-30	\$460.57	80				
								Yes	40		PE7371-40	\$478.85	81				
								Yes	30		PE7372-30	\$401.46	82				
								TNC Female	TNC Female		4 GHz	1.25:1	Yes	3	PE7393-3	\$167.92	83
													Yes	10	PE7393-10	\$206.54	84
													Yes	20	PE7393-20	\$206.54	85
													Yes	30	PE7393-30	\$206.54	86
	Yes			40									PE7393-40	\$224.07	87		
	Yes			50									PE7357-50	\$362.55	88		
	SMA Male			SMA Female				18 GHz	1.4:1		Yes	1	PE7018-1	\$570.27	89		
		Yes	2		PE7018-2	\$570.27	90										
		Yes	3		PE7018-3	\$650.58	91										
		Yes	6		PE7018-6	\$640.98	92										
		Yes	10		PE7018-10	\$650.58	93										
		Yes	20		PE7018-20	\$572.50	94										
		Yes	30		PE7018-30	\$650.58	95										
		Yes	40		PE7018-40	\$684.32	96										
		Yes	10		PE7357-10	\$445.94	97										
		Yes	20		PE7357-20	\$362.55	98										
		Yes	30		PE7357-30	\$445.94	99										
		Yes	40		PE7357-40	\$455.98	100										
		Yes	3		PE7357-3	\$445.94	101										
Yes		6	PE7357-6		\$345.63	102											
Yes		10	PE7363-10		\$442.09	103											
Yes		20	PE7363-20		\$442.09	104											
Yes		30	PE7363-30		\$442.09	105											
Yes		6	PE7363-6		\$435.57	106											
Yes	40	PE7363-40	\$478.85	107													
TNC Male	TNC Female	18 GHz	1.4:1	Yes	10	PE7054-10	\$818.90	108									
				Yes	20	PE7054-20	\$775.78	109									
				Yes	30	PE7054-30	\$775.78	110									
				Yes	20	PE7375-20	\$426.54	111									
				Yes	30	PE7375-30	\$406.62	112									
				Yes	40	PE7375-40	\$421.69	113									
				SMA Female	SMA Female	18 GHz	1.6:1	No	50	PE7312-50	\$523.42	114					
								No	10	PE7042-10	\$717.13	115					
								No	30	PE7042-30	\$661.69	116					
								No	3	PE7312-3	\$549.08	117					
								No	6	PE7312-6	\$523.42	118					
								No	10	PE7312-10	\$549.08	119					
No	20	PE7312-20	\$551.97					120									
No	30	PE7312-30	\$523.42					121									
No	40	PE7312-40	\$523.42					122									
7/16 DIN Male	7/16 DIN Female	7.5 GHz	1.45:1					No	50	PE7310-50	\$523.42	123					
								No	3	PE7310-3	\$549.08	124					
								No	6	PE7310-6	\$523.42	125					
								No	10	PE7310-10	\$549.08	126					
								No	20	PE7310-20	\$523.42	127					
								No	30	PE7310-30	\$523.42	128					
7/16 DIN Female	7/16 DIN Male	7.5 GHz	1.45:1					No	40	PE7310-40	\$523.42	129					
								No	50	PE7313-50	\$530.30	130					
								No	3	PE7313-3	\$530.30	131					
				No	6	PE7313-6	\$626.34	132									
				No	10	PE7313-10	\$530.30	133									
				7/16 DIN Male	7/16 DIN Female	7.5 GHz	1.45:1	No	10	PE7313-10	\$530.30	134					
								No	3	PE7313-3	\$530.30	135					
								No	6	PE7313-6	\$626.34	136					
								No	10	PE7313-10	\$530.30	137					
								No	3	PE7313-3	\$530.30	138					
								No	6	PE7313-6	\$626.34	139					

* Bi-Dir is Bi-Directional. If No then Attenuator is Directional. Maximum power applies to input connector only.



Technical Support
+1 (949) 261-1920



Same-Day Shipping,
Even Custom
Cable Assemblies

Attenuators & Equalizers

See Our Website For Current Pricing & Real-Time Stock Availability!

Fixed Attenuators

50 Ohm



Attenuators & Equalizers

See Our Website For Current Pricing & Real-Time Stock Availability!

Max. Power (Watts)	Connector Input	Connector Output	Max. Freq.	Construction Material	VSWR Max.	Bi-Dir.*	ATTN. (dB)	Model No	1 Pc. Price	See Web for Volume Pricing	ROW	
50 W	7/16 DIN Female	7/16 DIN Female	7.5 GHz	Black Anodized Aluminum Heatsink	1.45:1	No	20	PE7313-20	\$530.30	See Web for Volume Pricing	87	
		N Female	6 GHz			1.3:1	No	30	PE7313-30			\$530.30
							No	40	PE7313-40			\$626.34
					No		50	PE7316-50	\$492.04			
			7.5 GHz		1.45:1	No	50	PE7321-50	\$467.67			
						No	3	PE7316-3	\$469.06			
						No	6	PE7316-6	\$469.06			
					1.6:1	No	10	PE7316-10	\$469.06			
						No	20	PE7316-20	\$469.06			
						No	30	PE7316-30	\$469.06			
			18 GHz		1.6:1	No	40	PE7316-40	\$469.06			
						No	3	PE7321-3	\$467.67			
						No	6	PE7321-6	\$467.67			
					1.3:1	No	10	PE7321-10	\$467.67			
						No	20	PE7321-20	\$467.67			
	No					30	PE7321-30	\$467.67				
	N Male	7/16 DIN Female	6 GHz		1.3:1	No	40	PE7321-40	\$467.67			
						No	50	PE7314-50	\$469.06			
						No	3	PE7314-3	\$469.06			
			7.5 GHz		1.45:1	No	6	PE7314-6	\$469.06			
						No	10	PE7314-10	\$469.06			
						No	20	PE7314-20	\$469.06			
		3 GHz	1.15:1		No	30	PE7314-30	\$476.09				
					No	40	PE7314-40	\$469.06				
					No	3	PE7388-3	\$272.71				
			1.15:1		No	6	PE7388-6	\$272.71				
					No	10	PE7388-10	\$279.74				
					No	15	PE7388-15	\$279.74				
					No	20	PE7388-20	\$280.87				
					No	30	PE7388-30	\$270.22				
					No	40	PE7388-40	\$300.34				
	4 GHz	1.35:1	Yes		3	PE7389-3	\$238.85					
			Yes		6	PE7389-6	\$238.85					
			Yes		10	PE7389-10	\$238.85					
		1.35:1	Yes		15	PE7389-15	\$238.85					
			Yes		20	PE7389-20	\$236.23					
			Yes		30	PE7389-30	\$239.78					
			Yes		40	PE7389-40	\$251.20					
			Yes		2	PE7394-2	\$314.28					
			Yes		3	PE7394-3	\$366.05					
	6 GHz	1.35:1	Yes		6	PE7394-6	\$297.60					
			Yes		10	PE7394-10	\$297.60					
			Yes		30	PE7394-30	\$312.78					
		1.3:1	Yes		40	PE7394-40	\$315.12					
			No		50	PE7322-50	\$499.54					
No			6	PE7019-6	\$644.79							
18 GHz	1.45:1	No	10	PE7019-10	\$707.90							
		No	20	PE7019-20	\$687.01							
		No	30	PE7019-30	\$664.40							
	1.45:1	No	40	PE7019-40	\$651.93							
		No	3	PE7322-3	\$570.27							
		No	6	PE7322-6	\$570.27							
	1.6:1	No	10	PE7322-10	\$570.27							
		No	20	PE7322-20	\$662.20							
		No	30	PE7322-30	\$573.10							
N Female	7/16 DIN Male	6 GHz	1.3:1	No	40	PE7322-40	\$499.54					
				No	50	PE7311-50	\$485.94					
				No	3	PE7311-3	\$460.80					
		7.5 GHz	1.45:1	No	6	PE7311-6	\$460.80					
				No	10	PE7311-10	\$460.80					
				No	20	PE7311-20	\$478.77					
	6 GHz	1.3:1	No	30	PE7311-30	\$478.77						
			No	40	PE7311-40	\$460.80						
			No	50	PE7315-50	\$467.67						
	7/16 DIN Female	7.5 GHz	1.45:1	No	3	PE7315-3	\$467.67					
				No	6	PE7315-6	\$467.67					
				No	10	PE7315-10	\$467.67					
		7.5 GHz	1.45:1	No	20	PE7315-20	\$467.67					
				No	30	PE7315-30	\$467.67					
				No	40	PE7315-40	\$490.60					

* Bi-Dir is Bi-Directional. If No then Attenuator is Directional. Maximum power applies to input connector only.

Fixed Attenuators

50 Ohm



Max. Power (Watts)	Connector Input	Connector Output	Max. Freq.	Construction Material	VSWR Max.	Bi-Dir.*	ATTN. (dB)	Model No	1 Pc. Price	See Web for Volume Pricing	ROW	
50 W	N Female	N Male	6 GHz	Black Anodized Aluminum Heatsink	1.3:1	No	50	PE7317-50	\$588.55	See Web for Volume Pricing	2	
						No	3	PE7317-3	\$561.85			
			18 GHz			1.6:1	No	6	PE7317-6			\$570.27
							No	10	PE7317-10			\$570.27
							No	20	PE7317-20			\$591.01
							No	30	PE7317-30			\$570.27
		No			40		PE7317-40	\$581.69				
		No			50		PE7323-50	\$474.61				
		N Female	1.3:1		6 GHz	No	3	PE7323-3	\$497.85			
						No	6	PE7323-6	\$497.85			
					1.6:1	No	10	PE7323-10	\$576.26			
						No	20	PE7323-20	\$661.30			
	No					30	PE7323-30	\$578.98				
	No					40	PE7323-40	\$581.69				
	SMA Male	SMA Female	18 GHz		1.45:1	No	6	PE7020-6	\$766.61			
						No	10	PE7020-10	\$766.61			
						No	20	PE7020-20	\$684.18			
						No	30	PE7020-30	\$676.95			
						No	40	PE7020-40	\$674.93			
						Yes	3	PE7427-03	\$580.18			
					1.35:1	Yes	6	PE7427-06	\$571.62			
						Yes	10	PE7427-10	\$580.18			
						Yes	15	PE7427-15	\$550.16			
						Yes	20	PE7427-20	\$580.18			
Yes				30		PE7427-30	\$580.18					
Yes				40		PE7427-40	\$558.40					
SMA Female	1.6:1	No	6	PE7337-6	\$552.33							
		No	10	PE7337-10	\$552.33							
		No	20	PE7337-20	\$552.33							
		No	30	PE7337-30	\$552.33							
		No	40	PE7337-40	\$558.84							
		No	50	PE7337-50	\$656.95							
TNC Male	TNC Female	1.45:1	No	30	PE7055-30	\$833.12						
No			40	PE7055-40	\$807.94							
1.6:1			No	10	PE7351-10	\$529.45						
			No	20	PE7351-20	\$529.45						
			No	40	PE7351-40	\$635.33						
			No	50	PE7351-50	\$529.45						
100 W	7/16 DIN Male	7/16 DIN Female	Black Anodized Aluminum Heatsink	1.45:1	No	3	PE7203-3	\$886.12				
					No	6	PE7203-6	\$840.27				
					No	10	PE7203-10	\$886.12				
					No	20	PE7203-20	\$929.55				
					No	30	PE7203-30	\$840.27				
					No	40	PE7203-40	\$946.94				
		N Female			No	50	PE7203-50	\$946.94				
					No	60	PE7203-60	\$1,026.87				
					No	3	PE7211-3	\$768.73				
					No	6	PE7211-6	\$768.73				
					No	10	PE7211-10	\$768.73				
					No	20	PE7211-20	\$768.73				
	7/16 DIN Female	7/16 DIN Male		7/16 DIN Female	No	30	PE7211-30	\$806.41				
					No	40	PE7211-40	\$1,017.34				
					No	50	PE7211-50	\$1,017.34				
					No	60	PE7211-60	\$826.35				
					No	3	PE7201-3	\$852.86				
					No	6	PE7201-6	\$852.86				
		7/16 DIN Female		7/16 DIN Male	7/16 DIN Female	No	10	PE7201-10	\$886.12			
						No	20	PE7201-20	\$881.46			
						No	30	PE7201-30	\$840.27			
						No	40	PE7201-40	\$897.95			
						No	50	PE7201-50	\$897.95			
						No	60	PE7201-60	\$911.40			
7/16 DIN Female	7/16 DIN Male	7/16 DIN Female	No	3	PE7204-3	\$848.15						
			No	6	PE7204-6	\$848.15						
			No	10	PE7204-10	\$848.15						
			No	20	PE7204-20	\$848.15						
			No	30	PE7204-30	\$848.15						
			No	40	PE7204-40	\$905.81						
	7/16 DIN Female	7/16 DIN Female	7/16 DIN Female	No	50	PE7204-50	\$905.81					
				No	60	PE7204-60	\$905.81					

* Bi-Dir is Bi-Directional. If No then Attenuator is Directional. Maximum power applies to input connector only.



Technical Support
+1 (949) 261-1920



Same-Day Shipping,
Even Custom
Cable Assemblies

Attenuators & Equalizers

See Our Website For Current Pricing & Real-Time Stock Availability!

Fixed Attenuators

50 Ohm



Attenuators & Equalizers

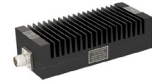
See Our Website For Current Pricing & Real-Time Stock Availability!

Max. Power (Watts)	Connector Input	Connector Output	Max. Freq.	Construction Material	VSWR Max.	Bi-Dir.*	ATTN. (dB)	Model No	1 Pc. Price	See Web for Volume Pricing	ROW
100 W	7/16 DIN Female	N Male	6 GHz	Black Anodized Aluminum Heatsink	1.45:1	No	3	PE7207-3	\$778.15	See Web for Volume Pricing	13
						No	6	PE7207-6	\$778.15		
						No	10	PE7207-10	\$778.15		
						No	20	PE7207-20	\$778.15		
						No	30	PE7207-30	\$778.15		
						No	40	PE7207-40	\$835.83		
						No	50	PE7207-50	\$835.83		
		No				60	PE7207-60	\$835.83			
		No				3	PE7212-3	\$776.59			
		No				6	PE7212-6	\$776.59			
		No				10	PE7212-10	\$776.59			
		No				20	PE7212-20	\$776.59			
		No				30	PE7212-30	\$776.59			
		No				40	PE7212-40	\$834.22			
	No	50	PE7212-50		\$834.22						
	No	60	PE7212-60		\$834.22						
	No	3	PE7026-3		\$920.31						
	No	6	PE7026-6		\$930.04						
	No	10	PE7026-10		\$821.70						
	No	20	PE7026-20		\$930.04						
	No	30	PE7026-30		\$855.97						
	No	40	PE7026-40		\$930.04						
	No	3	PE7205-3		\$778.15						
No	6	PE7205-6	\$778.15								
No	10	PE7205-10	\$778.15								
No	20	PE7205-20	\$778.15								
No	30	PE7205-30	\$778.15								
No	40	PE7205-40	\$835.83								
No	50	PE7205-50	\$835.83								
No	60	PE7205-60	\$835.83								
No	6	PE7021-6	\$917.64								
No	10	PE7021-10	\$795.13								
No	20	PE7021-20	\$779.84								
No	30	PE7021-30	\$843.41								
No	40	PE7021-40	\$825.78								
Yes	3	PE7385-3	\$478.85								
Yes	6	PE7385-6	\$478.85								
Yes	10	PE7385-10	\$478.85								
Yes	20	PE7385-20	\$478.85								
Yes	30	PE7385-30	\$478.85								
Yes	40	PE7385-40	\$490.27								
Yes	3	PE7421-3	\$558.84								
Yes	6	PE7421-6	\$558.84								
Yes	10	PE7421-10	\$570.27								
Yes	20	PE7421-20	\$562.75								
Yes	30	PE7421-30	\$604.56								
No	40	PE7421-40	\$699.17								
No	3	PE7213-3	\$745.16								
No	6	PE7213-6	\$810.93								
No	10	PE7213-10	\$837.14								
No	20	PE7213-20	\$842.06								
No	30	PE7213-30	\$828.22								
No	40	PE7213-40	\$853.53								
No	50	PE7213-50	\$869.92								
No	60	PE7213-60	\$845.39								
No	3	PE7424-03	\$1,098.82								
No	6	PE7424-06	\$955.83								
No	10	PE7424-10	\$934.85								
No	20	PE7424-20	\$967.70								
No	30	PE7424-30	\$1,005.44								
No	40	PE7424-40	\$1,017.07								
No	30	PE7237-30	\$749.42								
No	3	PE7202-3	\$768.73								
No	6	PE7202-6	\$768.73								
No	10	PE7202-10	\$768.73								
No	20	PE7202-20	\$768.73								
No	30	PE7202-30	\$810.67								
No	40	PE7202-40	\$826.35								
No	50	PE7202-50	\$826.35								

* Bi-Dir is Bi-Directional. If No then Attenuator is Directional. Maximum power applies to input connector only.

Fixed Attenuators

50 Ohm



Max. Power (Watts)	Connector Input	Connector Output	Max. Freq.	Construction Material	VSWR Max.	Bi-Dir.*	ATTN. (dB)	Model No	1 Pc. Price	See Web for Volume Pricing	ROW			
100 W	N Female	7/16 DIN Male	6 GHz	Black Anodized Aluminum Heatsink	1.45:1	No	60	PE7202-60	\$826.35	See Web for Volume Pricing	23			
		7/16 DIN Female				No	3	PE7206-3	\$917.24		24			
						No	6	PE7206-6	\$776.59					
						No	10	PE7206-10	\$776.59					
						No	20	PE7206-20	\$917.25					
						No	30	PE7206-30	\$776.59					
						No	40	PE7206-40	\$834.22					
		N Male				No	50	PE7206-50	\$834.22					
						No	60	PE7206-60	\$834.22					
						No	3	PE7208-3	\$781.68					
						No	6	PE7208-6	\$834.59					
						No	10	PE7208-10	\$781.68					
						No	20	PE7208-20	\$837.14					
						No	30	PE7208-30	\$803.76					
						No	40	PE7208-40	\$853.53					
						No	50	PE7208-50	\$845.39					
						No	60	PE7208-60	\$845.39					
						N Female	No	3	PE7214-3		\$827.96			
							No	6	PE7214-6		\$811.26			
		No					10	PE7214-10	\$819.83					
		No					20	PE7214-20	\$827.96					
		No					30	PE7214-30	\$827.96					
		No					40	PE7214-40	\$843.68					
		SMA Male				SMA Female	6 GHz	1.25:1	No		6	PE7022-6	\$920.31	
	No		20	PE7022-20	\$623.40									
	No		30	PE7022-30	\$921.27									
	No		40	PE7022-40	\$851.61									
	No		3	PE7227-3	\$683.43									
	No		6	PE7227-6	\$673.34									
	SMA Male		SMA Female	18 GHz	1.45:1	No			10		PE7227-10	\$673.34		
						No			20		PE7227-20	\$673.34		
						No			30		PE7227-30	\$673.34		
						No			40		PE7227-40	\$730.94		
						No			50		PE7227-50	\$770.82		
						No			60		PE7227-60	\$836.83		
	SMA Female	SMA Male	6 GHz			1.35:1	No	10	PE7425-10		\$1,061.67			
No							20	PE7425-20	\$979.27					
No							30	PE7425-30	\$1,074.01					
No							40	PE7425-40	\$1,085.44					
SMA Female							SMA Male	6 GHz	1.45:1	No	3	PE7221-3	\$706.33	
										No	6	PE7221-6	\$733.88	
	No	10		PE7221-10	\$744.87									
	No	20		PE7221-20	\$744.87									
	No	40		PE7221-40	\$808.58									
	No	50		PE7221-50	\$766.76									
TNC Male	TNC Female	1.5 GHz		1.15:1	No		60			PE7221-60	\$836.83			
					No		3			PE7228-3	\$741.29			
			No		20	PE7228-20	\$791.43							
			No		30	PE7228-30	\$830.24							
			No		50	PE7228-50	\$836.83							
			TNC Female		N Male	6 GHz	1.45:1			No	30	PE7056-30	\$896.32	
No	30	PE7210-30		\$721.29										
150 W	N Male	N Female	8 GHz	1.5:1	No	3	PE7218-3	\$730.48						
					No	6	PE7AP150-03	\$725.73						
					No	6	PE7AP150-06	\$714.15						
					No	10	PE7AP150-10	\$753.11						
					No	20	PE7AP150-20	\$753.11						
					No	30	PE7AP150-30	\$798.81						
200 W	N Male	N Female	3 GHz	1.35:1	No	40	PE7AP150-40	\$753.27						
					No	10	PE7387-10	\$682.20						
					No	20	PE7387-20	\$684.54						
					No	30	PE7387-30	\$685.46						
					No	40	PE7387-40	\$708.16						

* Bi-Dir is Bi-Directional. If No then Attenuator is Directional. Maximum power applies to input connector only.



Technical Support
+1 (949) 261-1920



Same-Day Shipping,
Even Custom
Cable Assemblies

Attenuators & Equalizers

See Our Website For Current Pricing & Real-Time Stock Availability!

Fixed Attenuators

50 Ohm



Max. Power (Watts)	Connector Input	Connector Output	Max. Freq.	Construction Material	VSWR Max.	Bi-Dir.*	ATTN. (dB)	Model No	1	2-4	5-9	10+	ROW
200 W	N Male	N Female	18 GHz	Black Anodized Aluminum Heatsink	1.5:1	No	20	PE7AP200-20	\$2,943.63	\$2,825.88	\$2,708.14	\$2,590.39	37
250 W	N Male	N Female	8.5 GHz	Black Anodized Aluminum Heatsink	1.45:1	No	10	PE7AP250-10	\$912.68	\$876.17	\$839.67	\$803.16	38
							20	PE7AP250-20	\$948.26	\$910.33	\$872.40	\$834.47	
							30	PE7AP250-30	\$948.26	\$910.33	\$872.40	\$834.47	
							40	PE7AP250-40	\$1,027.50	\$986.40	\$945.30	\$904.20	
300 W	N Male	N Female	1,000 MHz	Black Anodized Aluminum Heatsink	1.4:1	No	3	PE7031-3	\$2,151.81	\$2,065.74	\$1,979.67	\$1,893.59	39
							10	PE7031-10	\$1,934.76	\$1,857.37	\$1,779.98	\$1,702.59	
							30	PE7031-30	\$2,012.14	\$1,931.65	\$1,851.17	\$1,770.68	
							30	PE7032-30	\$2,319.45	\$2,238.27	\$2,157.09	\$2,087.51	
500 W	N Male	N Female	1,000 MHz	Black Anodized Aluminum Heatsink	1.15:1	No	6	PE7032-6	\$2,319.45	\$2,238.27	\$2,157.09	\$2,087.51	40
							30	PE7032-30	\$2,319.45	\$2,238.27	\$2,157.09	\$2,087.51	
			3 GHz		1.35:1	No	2	PE7085-2	\$2,513.02	\$2,425.06	\$2,337.11	\$2,261.72	41
							20	PE7085-20	\$2,056.14	\$1,973.89	\$1,891.65	\$1,809.40	
							3	PE7AP418-03	\$2,090.44	\$2,017.27	\$1,944.11	\$1,881.40	
							10	PE7AP418-10	\$2,090.44	\$2,006.82	\$1,923.20	\$1,839.59	
3 GHz	1.35:1	No	20	PE7AP418-20	\$2,090.44	\$2,006.82	\$1,923.20	\$1,839.59	42				
			30	PE7AP418-30	\$2,090.44	\$2,006.82	\$1,923.20	\$1,839.59					
			40	PE7AP418-40	\$2,090.44	\$2,017.27	\$1,944.11	\$1,881.40					
			No	30-30	PE7423-30	\$4,020.22	\$3,879.51	\$3,738.80		\$3,618.20			
1000 W	N Male	N Female	2.5 GHz	Black Aluminum Heatsink	1.35:1	No	40	PE7423-40	\$4,020.22	\$3,879.51	\$3,738.80	\$3,618.20	43

75 Ohm



Max. Power (Watts)	Connector Input	Connector Output	Max. Freq.	Construction Material	VSWR Max.	Bi-Dir.*	ATTN. (dB)	Model No	1 Pc. Price	See Web for Volume Pricing	ROW	
1 W	BNC Male	BNC Female	1,000 MHz	Nickel Plated Brass	1.2:1	Yes	1	PE7009-1	\$70.08	See Web for Volume Pricing	44	
							2	PE7009-2	\$70.08			
							3	PE7009-3	\$62.40			
							6	PE7009-6	\$64.62			
							10	PE7009-10	\$63.58			
	N Male	N Female	1,000 MHz	Nickel Plated Brass	1.2:1	Yes	20	PE7009-20	\$63.58			
							30	PE7009-30	\$63.58			
							3	PE7029-3	\$84.77			
							6	PE7029-6	\$84.77			
							10	PE7029-10	\$94.95			
2 W	BNC Male	BNC Female	4 GHz	Nickel Plated Brass	1.35:1	Yes	2	PE7050-2	\$147.44	See Web for Volume Pricing	46	
							3	PE7050-3	\$136.01			
							6	PE7050-6	\$136.01			
							10	PE7050-10	\$163.20			
							20	PE7050-20	\$163.20			
	F Male	F Female	1,000 MHz	Tri-Metal Plated Brass	1.3:1	Yes	30	PE7050-30	\$136.01			
							1	PE7057-1	\$92.87			
							2	PE7057-2	\$92.87			
							3	PE7057-3	\$122.46			
							6	PE7057-6	\$122.46			
4 GHz	Passivated Stainless Steel	Passivated Stainless Steel	4 GHz	Passivated Stainless Steel	1.3:1	Yes	10	PE7057-10	\$124.58	See Web for Volume Pricing	47	
							1	PE7396-1	\$78.44			
							2	PE7396-2	\$79.93			
							3	PE7396-3	\$75.07			
							4	PE7396-4	\$95.92			
	N Male	N Female	4 GHz	Passivated Stainless Steel	Passivated Stainless Steel	1.3:1	Yes	5	PE7396-5		\$91.35	48
								6	PE7396-6		\$74.15	
								7	PE7396-7		\$95.92	
								8	PE7396-8		\$95.92	
								9	PE7396-9		\$88.97	
N Male	N Female	4 GHz	Passivated Stainless Steel	Passivated Stainless Steel	1.3:1	Yes	10	PE7396-10	\$89.90	49		
							16	PE7396-16	\$95.92			
							20	PE7396-20	\$74.15			
							1	PE7044-1	\$170.29			
							2	PE7044-2	\$170.29			
							3	PE7044-3	\$167.76			

* Bi-Dir is Bi-Directional. If No then Attenuator is Directional. Maximum power applies to input connector only.

Attenuators & Equalizers

See Our Website For Current Pricing & Real-Time Stock Availability!

Fixed Attenuators

75 Ohm



Max. Power (Watts)	Connector Input	Connector Output	Max. Freq.	Construction Material	VSWR Max.	Bi-Dir.*	ATTN. (dB)	Model No	1-9	10--24	25-49	50+	ROW
2 W	N Male	N Female	4 GHz	Passivated Stainless Steel	1.3:1	Yes	6	PE7044-6	\$190.64	\$183.01	\$177.30	\$173.48	49
						Yes	10	PE7044-10	\$167.76	\$159.37	\$150.98	\$144.27	
						Yes	20	PE7044-20	\$167.76	\$159.37	\$150.98	\$144.27	
						Yes	30	PE7044-30	\$167.76	\$159.37	\$150.98	\$144.27	

Step Attenuators, Push Button

50 Ohm



Max. Power (Watts)	Conn. Input	Conn. Output	Frequency Range (MHz)	Construction Material	VSWR Max. (MHz)	ATTN. Range (dB)	Step Size (dB)	Model No	1 Pc. Price	See Web for Volume Pricing			ROW
1 W	BNC Female	BNC Female	DC-750	Brass	DC-100: 1.1:1 100-300: 1.25:1 300-500: 1.25:1 500-750: 1.4:1	0-65	1.0	PE7008-1	\$954.15	See Web for Volume Pricing			50
					1.4:1	0-82.5		PE70A1021	\$1,521.12				51
					DC-100: 1.1:1 100-300: 1.25:1 300-500: 1.25:1 500-750: 1.4:1	0-45.5	0.5	PE7008-2	\$1,001.74				52
					1.4:1	0-82.5	0.5	PE7008-6	\$1,212.36				
						0-102	1.0	PE7008-5	\$1,315.77				

75 Ohm



Max. Power (Watts)	Conn. Input	Conn. Output	Frequency Range (MHz)	Construction Material	VSWR Max. (MHz)	ATTN. Range (dB)	Step Size (dB)	Model No	1-4	5-9	10-24	25+	ROW
1 W	BNC Female	BNC Female	DC-500	Brass	DC-100: 1.1:1 100-300: 1.2:1 300-500: 1.3:1	0-65	1.0	PE7008-3	\$966.55	\$918.22	\$869.90	\$831.23	52

Step Attenuators, Toggle

75 Ohm



Max. Power (Watts)	Conn. Input	Conn. Output	Frequency Range (MHz)	Construction Material	VSWR Max. (MHz)	ATTN. Range (dB)	Step Size (dB)	Model No	1-4	5-9	10-24	25+	ROW
1 W	BNC Female	BNC Female	DC-1,000	Aluminum	1.3:1	0-42		PE70A1001	\$758.06	\$720.16	\$682.25	\$651.93	53
	F Female	F Female	0.3-1,000		1.37:1	0-71		PE70A1008	\$827.56	\$786.18	\$744.80	\$711.70	54

* Bi-Dir is Bi-Directional. If No then Attenuator is Directional. Maximum power applies to input connector only.



Technical Support
+1 (949) 261-1920



Same-Day Shipping,
Even Custom
Cable Assemblies

Attenuators & Equalizers

See Our Website For Current Pricing & Real-Time Stock Availability!

Step Attenuators, Rotary

50 Ohm



Max. Power (Watts)	Conn. Input	Conn. Output	Frequency Range (MHz)	Construction Material	VSWR Max. (MHz)	ATTN. Range (dB)	Step Size (dB)	Model No	1 Pc. Price	See Web for Volume Pricing			ROW	
1 W	BNC Female	BNC Female	DC-1,000	Aluminum	1.2:1	0-1	0.1	PE7034-1	\$650.25				55	
					DC-1,000: 1.2:1	0-100	10.0	PE7034-2	\$772.72					
2 W	BNC Female	BNC Female	DC-2,000	Aluminum	1.3:1	0-1	0.1	PE7034-6	\$679.82	See Web for Volume Pricing				56
					DC-2,200	0-10	1.0	PE70A1024	\$672.12					57
			SMA Female			SMA Female	DC-1,000: 1.2:1	0-70	10.0					PE70A1022
					1,000-2,200: 1.4:1		0-10	1.0	PE70A1025				\$639.00	59
						0-70	10.0	PE70A1023	\$690.74					

75 Ohm



Max. Power (Watts)	Conn. Input	Conn. Output	Frequency Range (MHz)	Construction Material	VSWR Max. (MHz)	ATTN. Range (dB)	Step Size (dB)	Model No	1 Pc. Price	See Web for Volume Pricing			ROW
1 W	BNC Female	BNC Female	DC-500	Aluminum	1.3:1	0-10	1.0	PE7035-2	\$448.19		See Web for Volume Pricing		60
			DC-1,000		DC-500: 1.3:1	0-1	0.1	PE7035-5	\$1,015.96				

DC Bias Attenuators

50 Ohm



Max. Power (Watts)	Conn. Input	Conn. Output	Frequency Range (MHz)	Construction Material	VSWR Max.	Max. V (V)	Max. I (Amp)	ATTN. (dB)	Model No	1-9	10-24	25-49	50+	ROW
2 W	N Male	N Female	500-2,000	Passivated Stainless Steel	1.35:1	100	2	6	PE7062-6	\$180.86	\$171.82	\$162.77	\$155.54	61
								10	PE7062-10	\$177.57	\$168.69	\$159.81	\$152.71	
								20	PE7062-20	\$152.31	\$144.69	\$137.08	\$130.99	
	SMA Male	SMA Female						6	PE7061-6	\$150.43	\$142.91	\$135.39	\$129.37	62
								10	PE7061-10	\$150.43	\$142.91	\$135.39	\$129.37	
								20	PE7061-20	\$163.20	\$155.04	\$146.88	\$140.35	
TNC Male	TNC Female	6	PE7063-6	\$165.22	\$156.96	\$148.70	\$142.09	63						
		10	PE7063-10	\$190.64	\$181.11	\$171.58	\$163.95							
		20	PE7063-20	\$190.64	\$181.11	\$171.58	\$163.95							

75 Ohm



Max. Power (Watts)	Conn. Input	Conn. Output	Frequency Range (MHz)	Construction Material	VSWR Max.	Max. V (V)	Max. I (Amp)	ATTN. (dB)	Model No	1-9	10-24	25-49	50+	ROW
2 W	F Male	F Female	500-2,000	Brass	1.45:1	100	2	6	PE7064-6	\$193.14	\$183.48	\$173.83	\$166.10	64
								10	PE7064-10	\$193.14	\$183.48	\$173.83	\$166.10	
								20	PE7064-20	\$190.29	\$180.78	\$171.26	\$163.65	

Continuously Variable Attenuators

50 Ohm



Max. Power (Watts)	Conn. Input	Conn. Output	Frequency Range (MHz)	Construction Material	VSWR Max.	ATTN. (dB)	Model No	1	2-4	5-9	10+	ROW
5 W	SMA Female	SMA Female	DC-4,000		DC-1,000: 1.5:1 1,000-2,000: 1.6:1 2,000-3,000: 1.7:1 3,000-4,000: 1.8:1	5-95	PE7422	\$1,731.32	\$1,662.07	\$1,592.81	\$1,523.56	65

ACTIVE ATTENUATORS

TTL, USB, CMOS and Relay



Type	Frequency Range (GHz)	Atten. Range (dB)	IL (dB)	Step Resolution (dB)	Switching Speed (µs)	Input/Output Connector	Model No	1 Pc. Price	See Web for Volume Pricing			ROW
CMOS	DC - 13	0 - 31.5	5	0.5	6,000,000	SMA Female	PE70A5003	\$4,956.42	See Web for Volume Pricing			66
	DC - 1		1.5				PE70A8001	\$925.30				67
	DC - 1	0 - 63	1.5	PE70A8000			\$975.78	68				
	DC - 1		2.2	PE70A8003			\$1,796.30	69				
	DC - 1		2.5	PE70A8004			\$2,138.65	70				
Relay	DC - 1.5	0 - 127	3.2	1	45	SMA Female	PE70A8005	\$2,326.58	71			
	DC - 2		3.0				PE70A8002	\$3,180.46	72			
	DC - 13	0 - 31.5	5.5	0.25			PE70A4000	\$5,334.73	73			
	TTL	5 MHz - 2.15	0 - 63	5.25			1	5,000	F Female	PE70A5012	\$2,117.04	74
		30 MHz - 3	0 - 31.75	2.5			0.25	1,000	SMA Female	PE70A5004	\$1,686.30	75
		30 MHz - 3	0 - 63	4	1	PE70A5006	\$1,665.85			76		
		30 MHz - 3	0 - 63.5	4	0.5	PE70A5005	\$1,618.14			77		
		30 MHz - 3	0 - 95	6	1	PE70A5007	\$2,163.25			78		
	30 MHz - 6	0 - 60	4	0.25	50,000	PE70A5000	\$6,488.89			79		
	USB	100 MHz - 18	0 - 30	5	1	1	2.92mm Female	PE70A5001	\$7,584.26	80		
		100 MHz - 40		8				PE70A5002	\$11,042.46	81		
		200 MHz - 6	0 - 63	5.5	1	1,000	SMA Female	PE70A5009	\$1,687.65	82		
		200 MHz - 6		8				PE70A5010	\$2,051.34	83		
		450 MHz - 2.15	0 - 127	4.5	2,000	F Female	PE70A5011	\$2,142.01	84			
		500 MHz - 18	0 - 60	4.5	0.06	1	SMA Female	PE70A6000	\$7,427.18	85		
700 MHz - 3		0 - 127	6	1	5,000	SMA Female	PE70A5008	\$2,079.00	86			
18 - 40		0 - 30	6	0.03	1	2.4mm Female	PE70A6001	\$8,147.25	87			
100 MHz - 18			5	SMA Female	PE70A3900	\$4,506.94	88					
100 MHz - 40			5	2.92mm Female	PE70A3901	\$6,128.09	89					
Bench-Top TTL	200 MHz - 6	0 - 95	8.3	1	4,000	SMA Female	PE70A3902	\$2,163.25	90			
	200 MHz - 6		8				PE70A5013	\$10,080.79	91			

Variable Voltage Attenuators



Frequency Range (GHz)	Atten. Range (dB)	Insertion Loss (dB)	Switching Speed (µsec)	Input / Output Connectors	Model No	1	2-4	5-9	10+	ROW
DC - 20	0 - 30	2.5	500	SMA Female	PE70A1017	\$8,851.71	\$8,497.64	\$8,143.57	\$7,789.50	92
50 MHz - 2.2	0 - 20	3			PE70A1031	\$1,439.67	\$1,382.08	\$1,324.50	\$1,266.91	93
400 MHz - 6	0 - 40	4			PE70A1000	\$6,759.53	\$6,489.15	\$6,218.77	\$5,948.39	94
500 MHz - 18	0 - 60	4.5			PE70A2900	\$6,738.50	\$6,468.96	\$6,199.42	\$5,929.88	95
2 - 4		2			PE70A2000	\$5,760.40	\$5,529.98	\$5,299.57	\$5,069.15	96
4 - 8		2.5	PE70A2001	\$6,750.45	\$6,480.43	\$6,210.41	\$5,940.40	97		

Attenuators & Equalizers

See Our Website For Current Pricing & Real-Time Stock Availability!

Variable Voltage Attenuators



Frequency Range (GHz)	Atten. Range (dB)	Insertion Loss (dB)	Switching Speed (µsec)	Input / Output Connectors	Model No	1	2-4	5-9	10+	ROW
6 - 12	0 - 60	2.8	500	SMA Female	PE70A2002	\$7,083.10	\$6,799.78	\$6,516.45	\$6,233.13	98
8 - 18		3.7			PE70A2003	\$7,412.97	\$7,116.45	\$6,819.93	\$6,523.41	99

EQUALIZERS

Positive Slope



Frequency Range (GHz)	Typ. Equalizing Value (dB)	Typ. Small Signal IL (dB)	Typ Input-Output VSWR	Max. RF Input Power (dBm)	In-Out Connectors (Field Replaceable)	Model No	1-4	5-9	10-24	25+	ROW
0.5 MHz - 2	2	1.4	1.8:1	+30	SMA Female	PE70A9000	\$712.56	\$676.93	\$641.30	\$612.80	1
	4	1				PE70A9001	\$730.92	\$694.37	\$657.83	\$628.59	2
	6	1.8				PE70A9002	\$741.94	\$704.84	\$667.75	\$638.07	3
1 - 18	4	1				PE70A9003	\$1,270.84	\$1,207.30	\$1,143.76	\$1,092.92	4
	6	1				PE70A9004	\$1,270.84	\$1,207.30	\$1,143.76	\$1,092.92	5
	8	1.5				PE70A9005	\$1,270.84	\$1,207.30	\$1,143.76	\$1,092.92	6
2 - 6	2	1				PE70A9006	\$1,017.41	\$966.54	\$915.67	\$874.97	7
	4	1.5				PE70A9007	\$1,057.80	\$1,004.91	\$952.02	\$909.71	8
2 - 12	4	1.5				PE70A9008	\$1,017.41	\$966.54	\$915.67	\$874.97	9
	8	1.5				PE70A9009	\$1,101.88	\$1,046.79	\$991.69	\$947.62	10
	2	1.5				PE70A9010	\$1,219.42	\$1,158.45	\$1,097.48	\$1,048.70	11
6 - 18	4	1.5				PE70A9011	\$1,241.46	\$1,179.39	\$1,117.31	\$1,067.66	12
	6	2				PE70A9012	\$1,270.84	\$1,207.30	\$1,143.76	\$1,092.92	13
	8	1.5				PE70A9013	\$1,300.22	\$1,235.21	\$1,170.20	\$1,118.19	14
	2	2				PE70A9014	\$1,425.10	\$1,353.85	\$1,282.59	\$1,225.59	15
18 - 40	4	2				PE70A9015	\$1,458.16	\$1,385.25	\$1,312.34	\$1,254.02	16
	6	2				PE70A9016	\$1,483.87	\$1,409.68	\$1,335.48	\$1,276.13	17
26.5 - 40	4	3				PE70A9017	\$1,425.10	\$1,353.85	\$1,282.59	\$1,225.59	18
	5	2.5	PE70A9018	\$1,447.14	\$1,374.78	\$1,302.43	\$1,244.54	19			

BALUNS



Frequency Range (MHz)	Balanced Impedance (Ω)	Unbalanced Impedance (Ω)	Package	Model No	1-9	10-24	25-49	50+	ROW
20 - 520	25	50	Surface Mount	PE2BL1001	\$260.75	\$247.71	\$234.68	\$224.25	20
20 - 1,000				PE2BL1002	\$252.30	\$239.69	\$227.07	\$216.98	21
80 - 1,000				PE2BL1003	\$231.27	\$219.71	\$208.14	\$198.89	22
100 - 520				PE2BL1004	\$252.30	\$239.69	\$227.07	\$216.98	23
225 - 2,000				PE2BL1000	\$245.48	\$233.21	\$220.93	\$211.11	24
500 - 2,000				PE2BL1005	\$232.78	\$221.14	\$209.50	\$200.19	25
800 - 2,500				PE2BL1006	\$287.41	\$273.04	\$258.67	\$247.17	26

* Bi-Dir is Bi-Directional. If No then Attenuator is Directional. Maximum power applies to input connector only.

Attenuators & Equalizers

Baluns

See Our Website For Current Pricing & Real-Time Stock Availability!

Kupuj tylko przez Meratronik S.A.!

W niniejszym katalogu zamieszczone są linki do produktów na stronach producenta. Zachęcamy jednak do bezpośrednich zakupów przez Meratronik S.A. Poniżej szereg korzyści:

- Ekspresowe pozyskiwanie ofert
- Procedury celne po naszej stronie
- Odroczone termin płatności
- Ciągła dostępność ponad 40 000 elementów
- Obsługa gwarancyjna i pogwarancyjna realizowana przez Meratronik S.A.
- Najniższy koszt transportu
- Dostawa już od 5 dni roboczych

Jak zamawiać?

- Wyszukaj interesujące Cię urządzenia lub akcesoria na stronie producenta lub w katalogu
- Skontaktuj się z nami przez zakładkę **"zapytaj o produkt"** znajdującą się na www.meratronik.pl przy każdej kategorii produktowej lub pisząc bezpośrednio na adres mailowy jm@meratronik.pl
- Chcesz zlecić nam dobór optymalnych rozwiązań?

Jesteśmy do Twojej dyspozycji

ZEAP MERATRONIK S.A.

TEL: +48 22 855 34 32

FAX: +48 22 644 25 56

EMAIL: sales@meratronik.pl

WEB: www.meratronik.pl

2022
RF Product Guide

